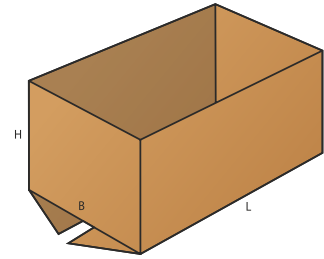
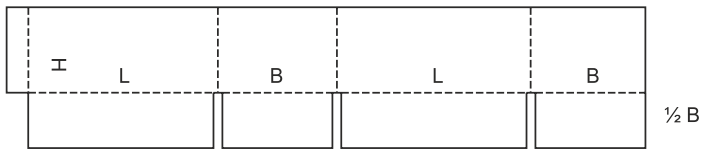


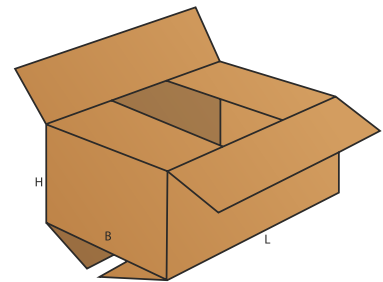
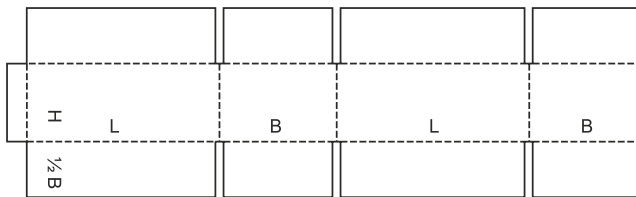
## FEFCO 02XX – KLAPANINIO TIPO DĖŽĖS

Klapaninio (amerikietiško) tipo dėžės supaprastinto dizaino lankstomos dėžutės, pagamintos su viršutiniais ir apatiniais atvartais, suklijuojama klijuais, segama kabėmis ar kitokiu būdu sutvirtinama šonine siūle, kurie sulankstymo metu suformuoja dėžutės dugną ir dangtį.

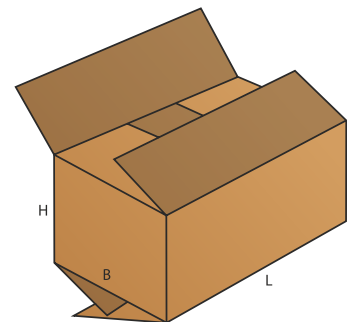
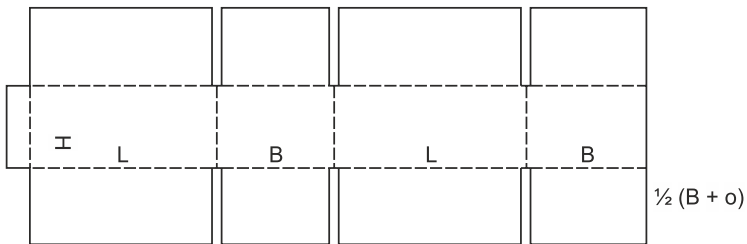
0200



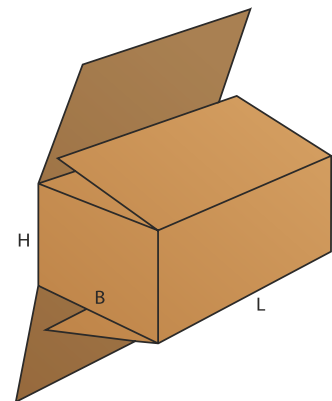
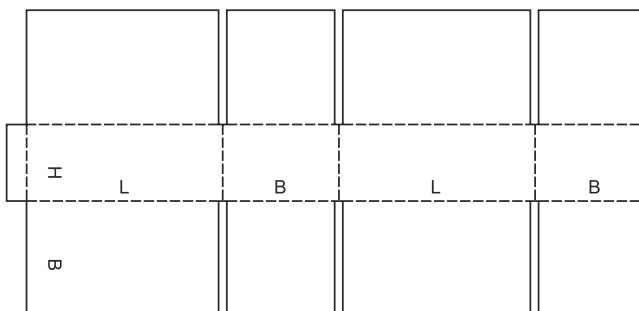
0201



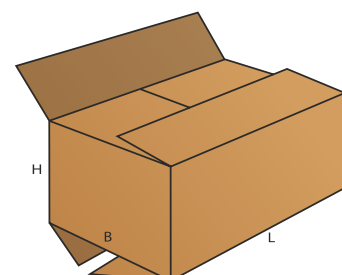
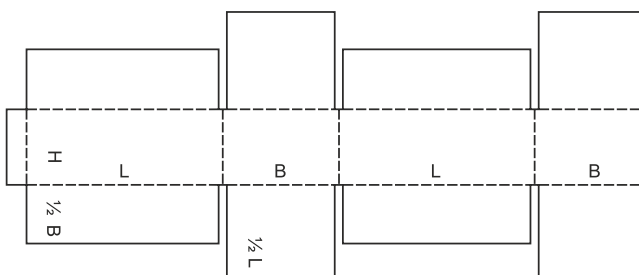
0202



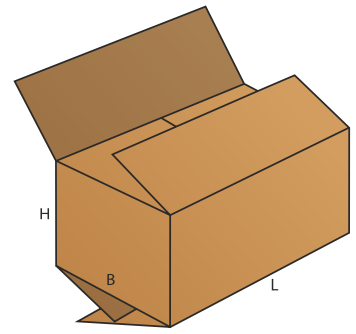
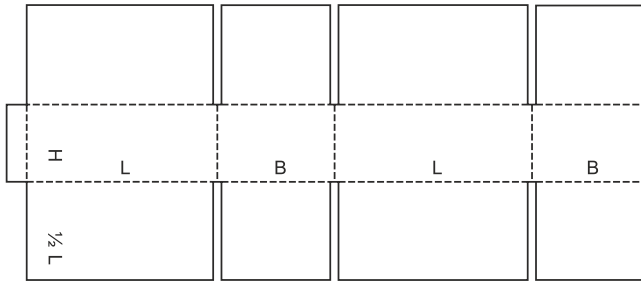
0203



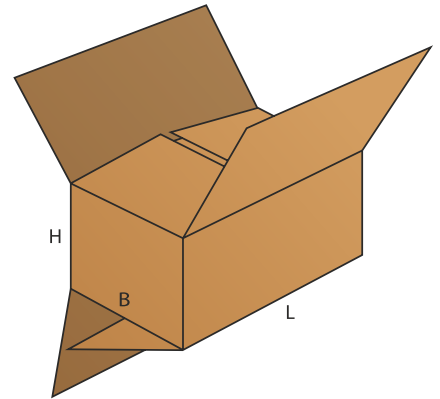
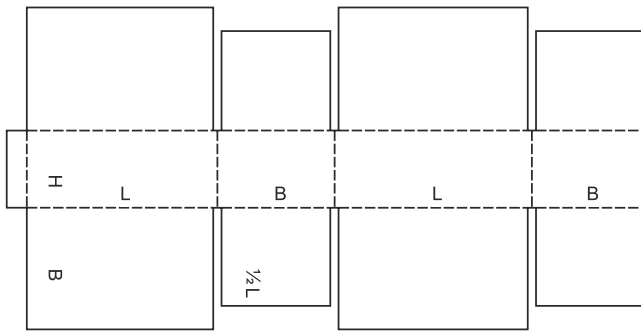
0204



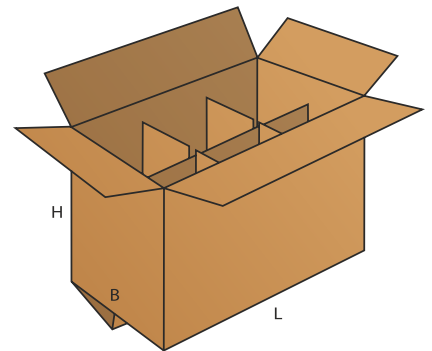
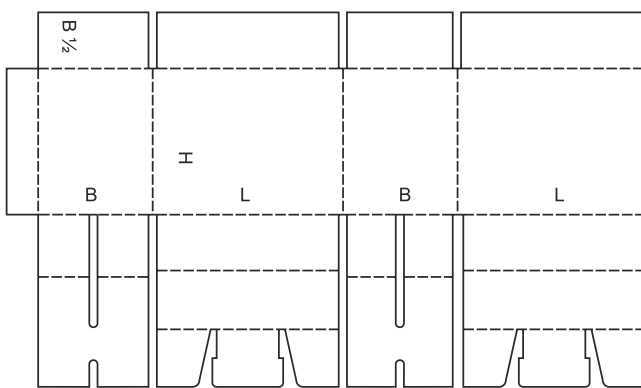
0205



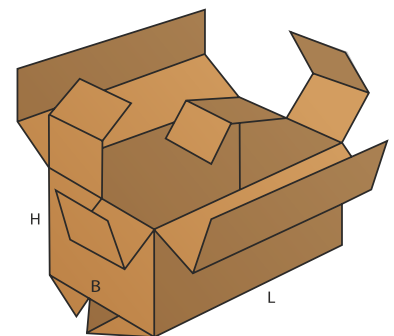
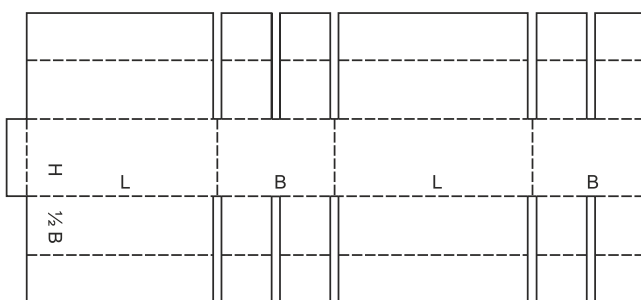
0206



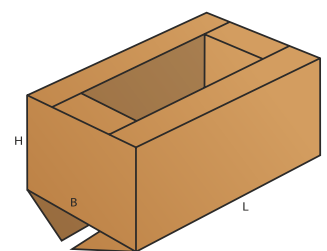
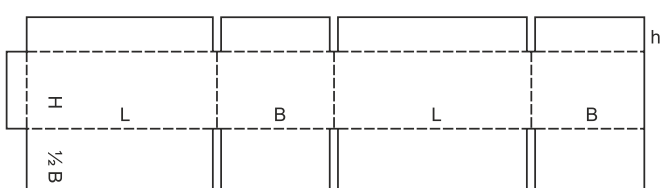
0207



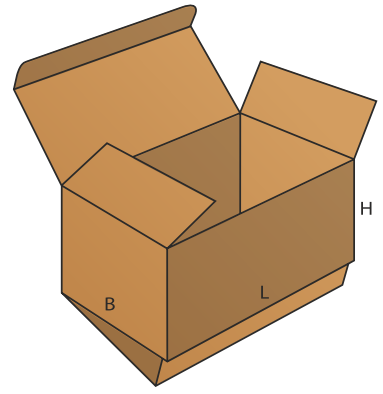
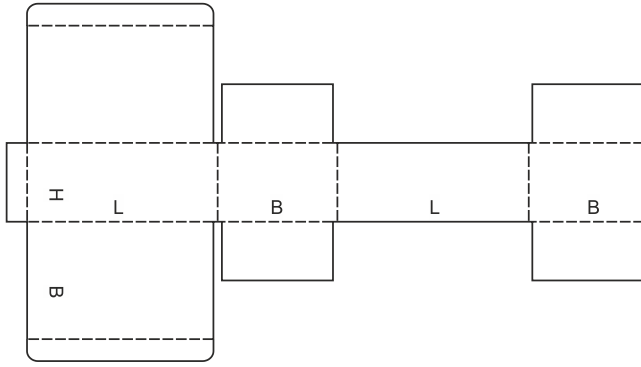
0208



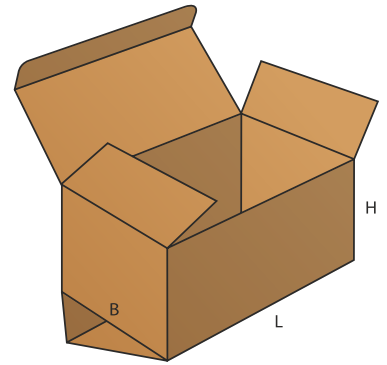
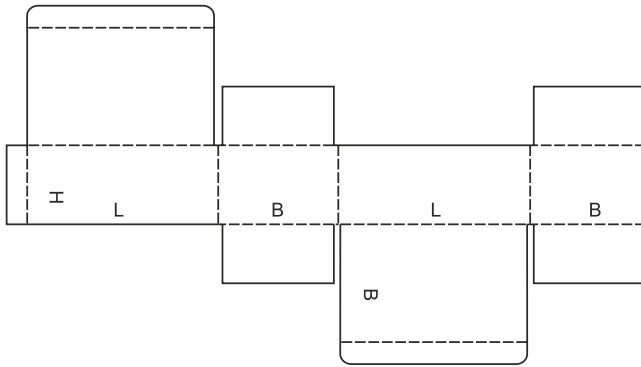
0209



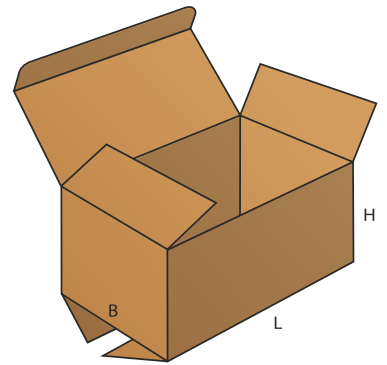
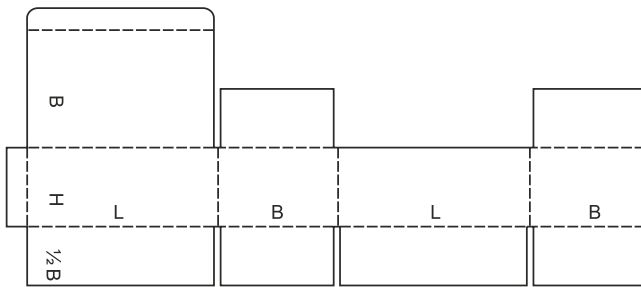
0210



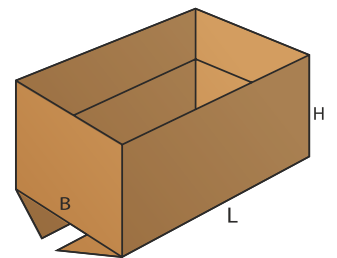
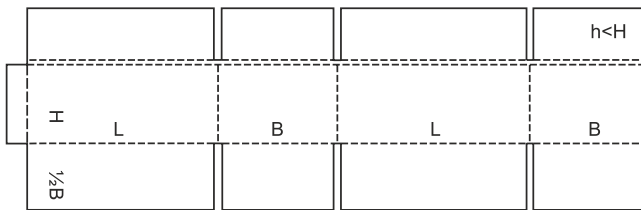
0211



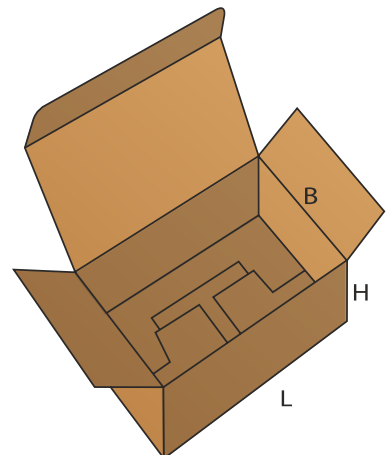
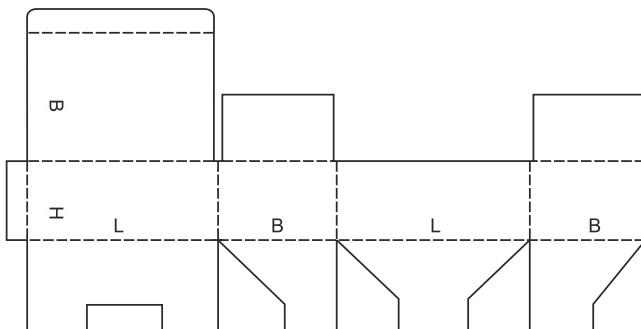
0212



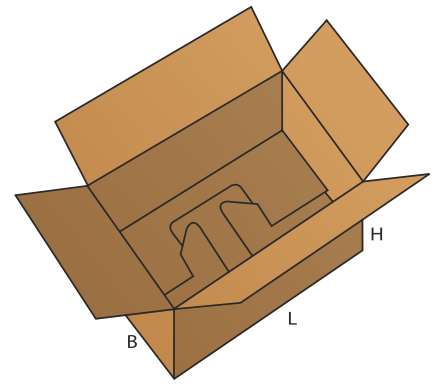
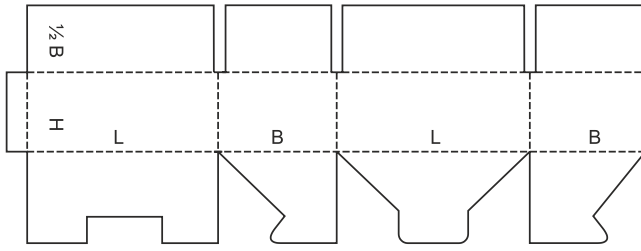
0214



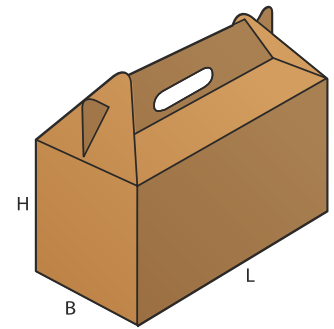
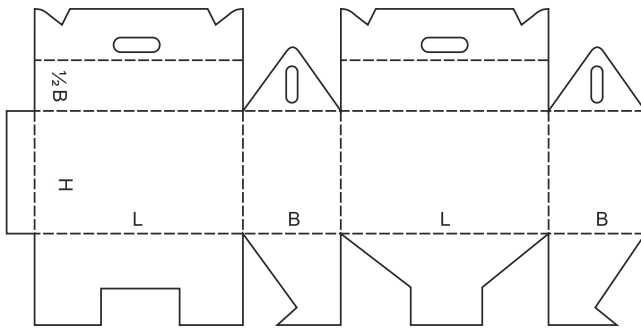
0215



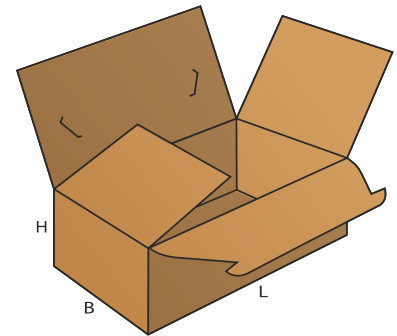
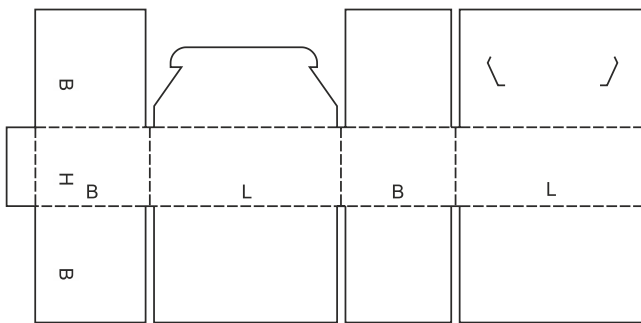
0216



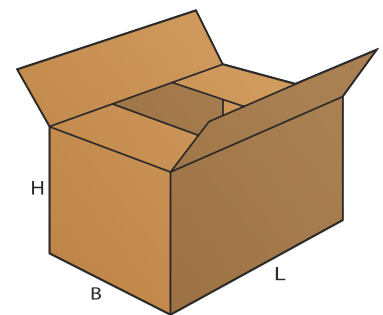
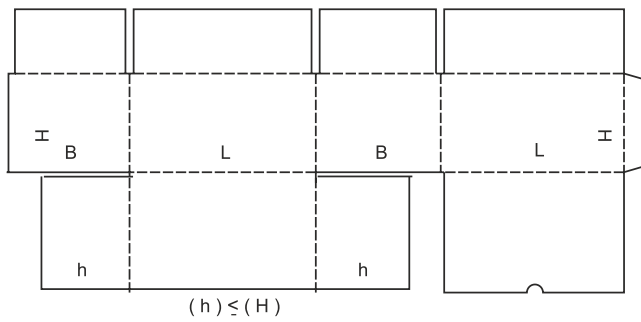
0217



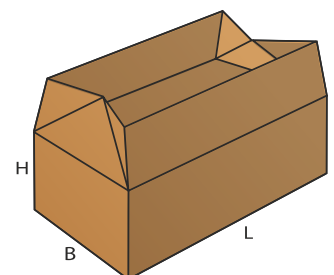
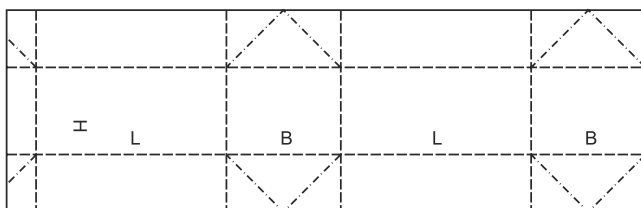
0218



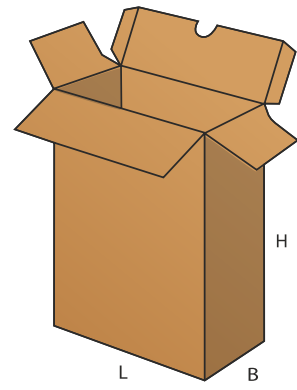
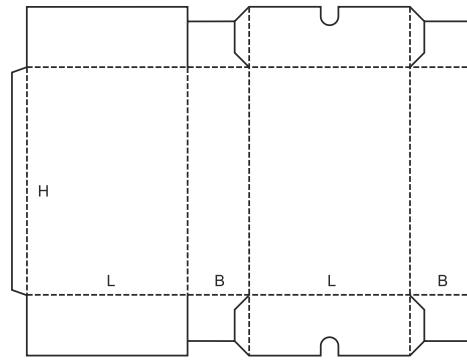
0225



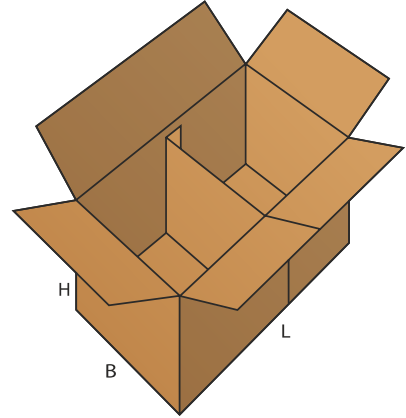
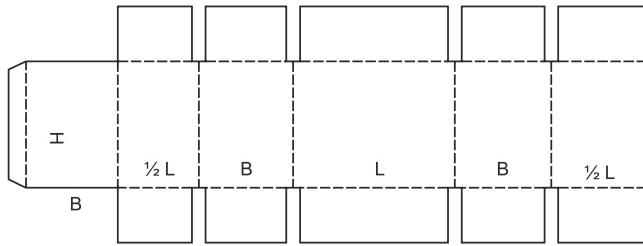
0226



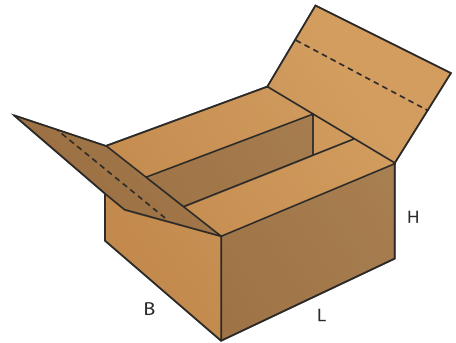
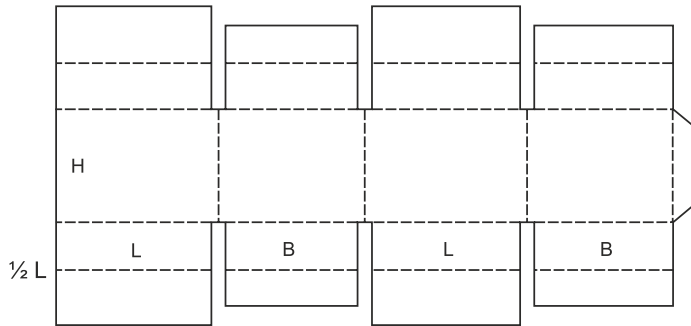
0227



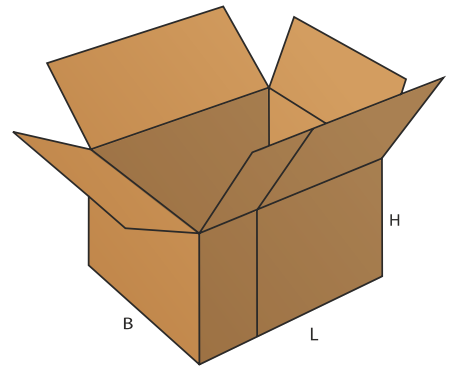
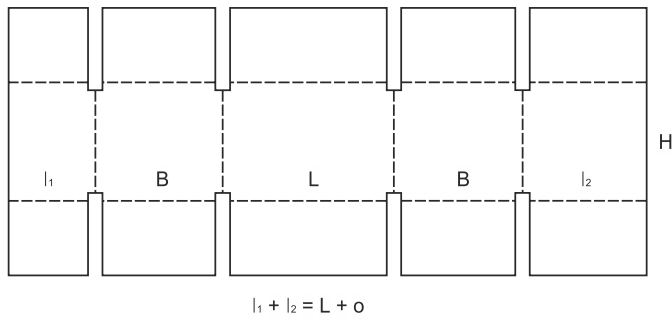
0228



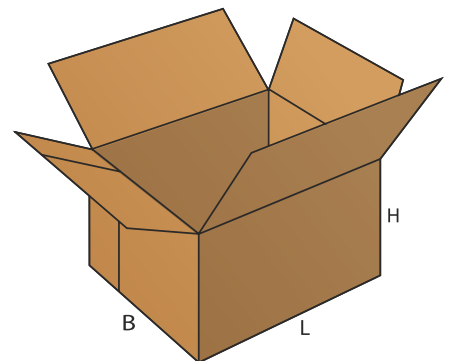
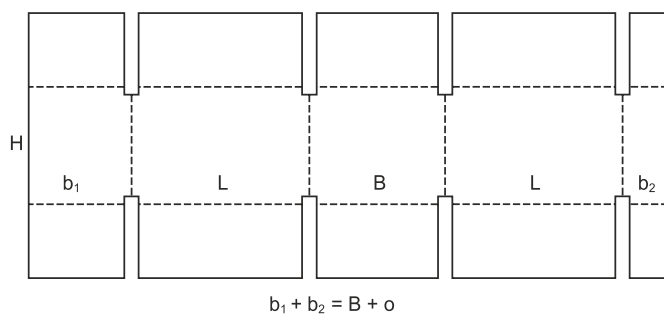
0229



0230



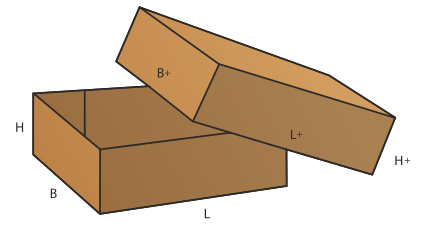
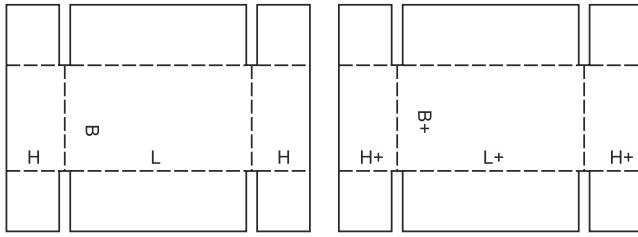
0231



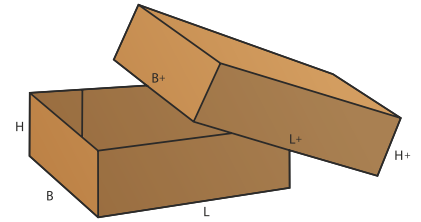
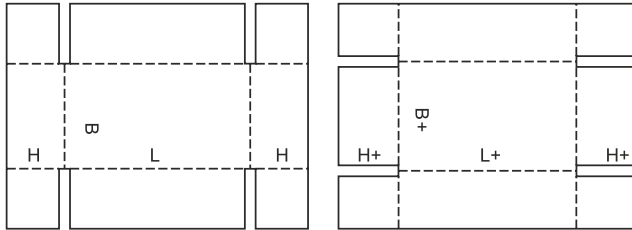
# FEFCO 03XX – TELESKOPINĖS DĖŽĖS

Teleskopinės dėžės susideda iš kelių dalių – su atskiru korpusu ir dangčiu, kai dangtis uždengia korpusą iš viršaus.

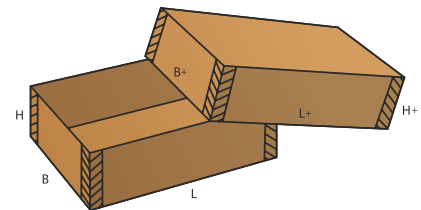
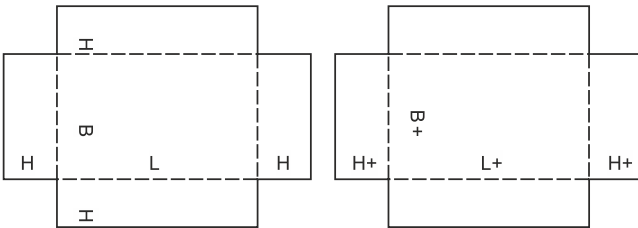
0300



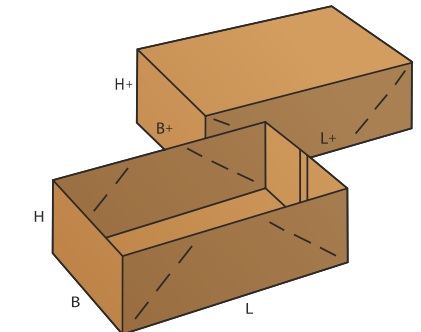
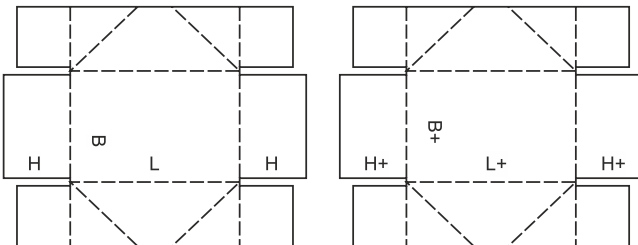
0301



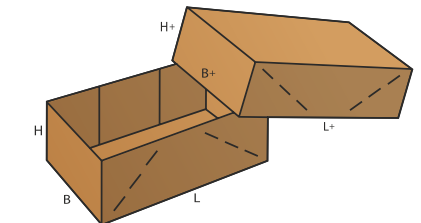
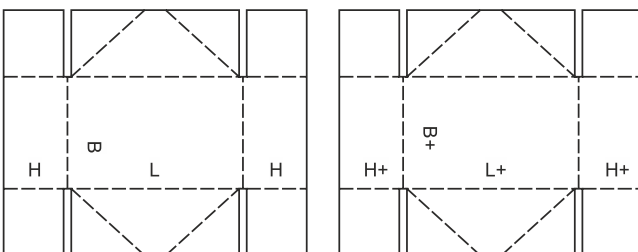
0302



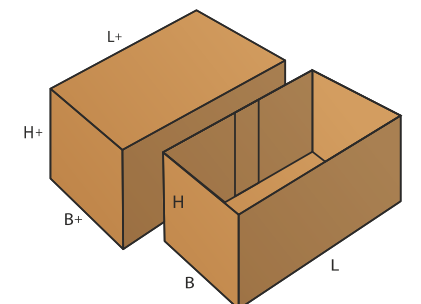
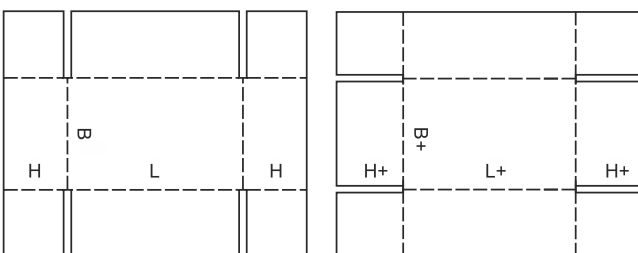
0303



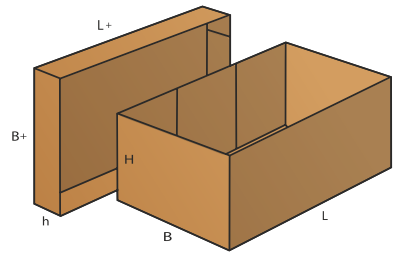
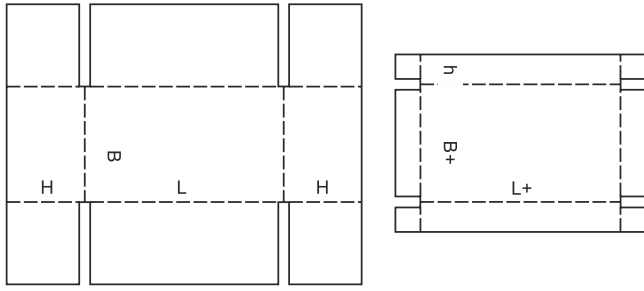
0304



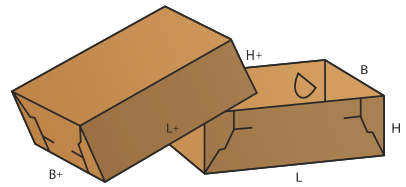
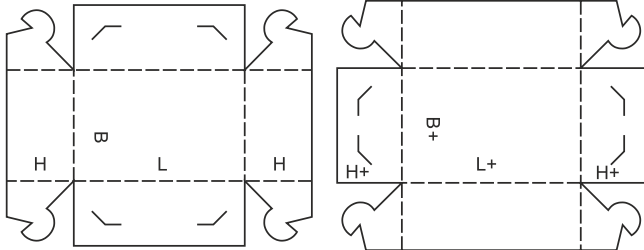
0305



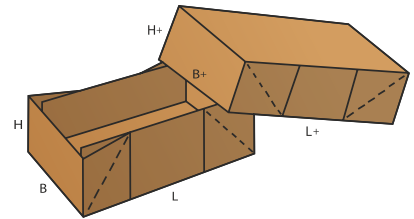
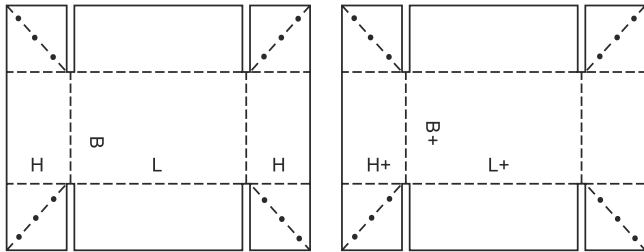
0306



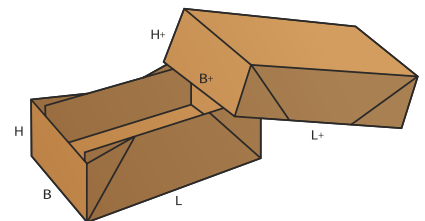
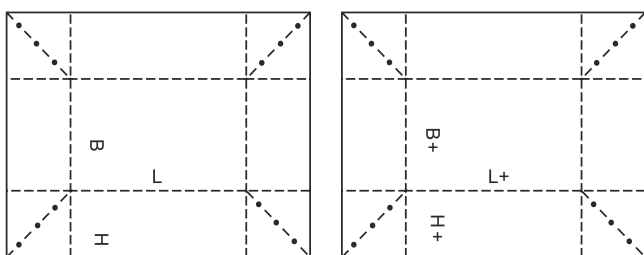
0307



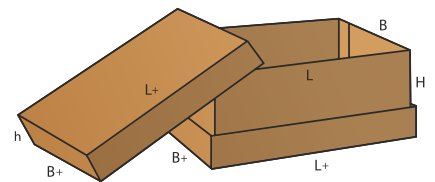
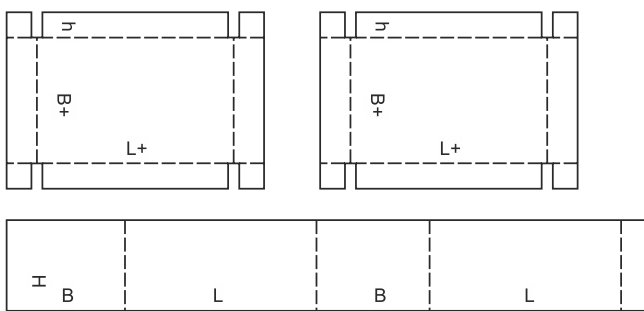
0308



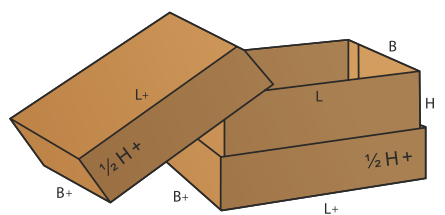
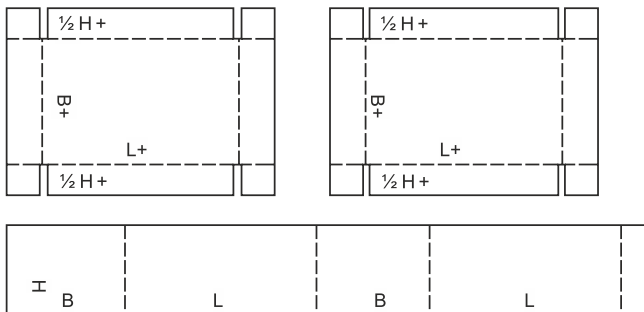
0309



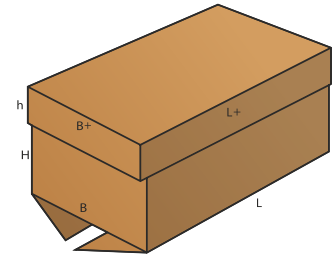
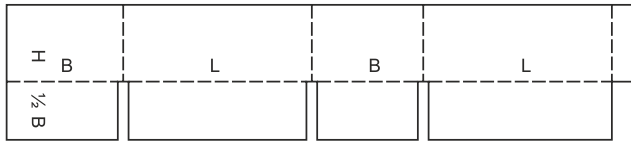
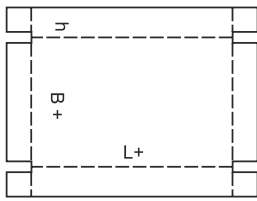
0310



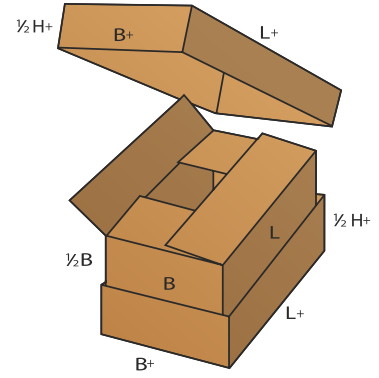
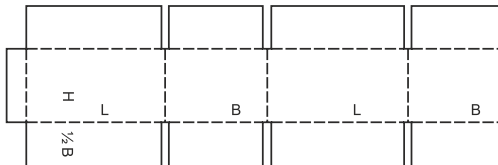
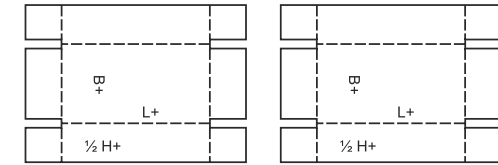
0311



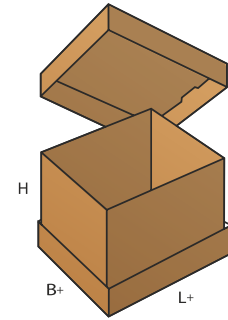
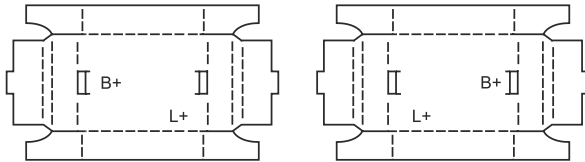
0312



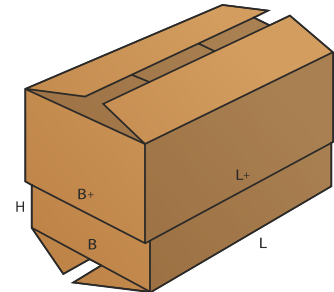
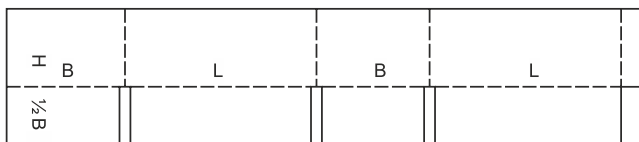
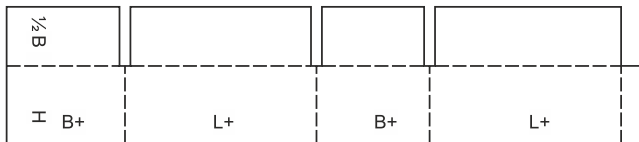
0313



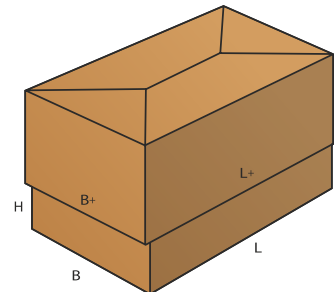
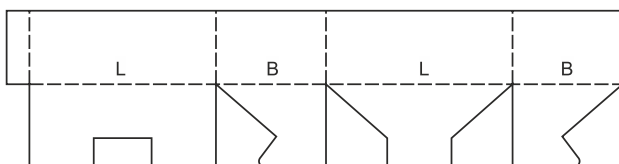
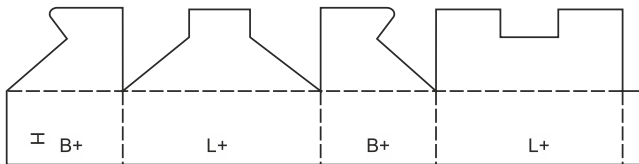
0314



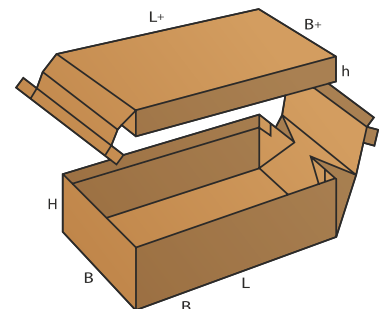
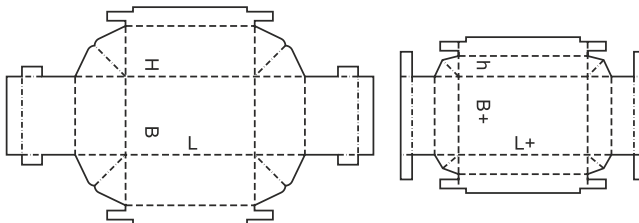
0315



0316

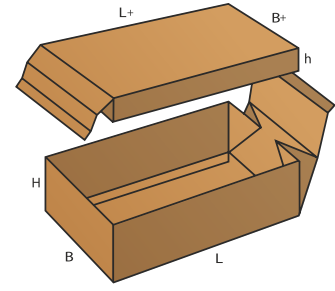
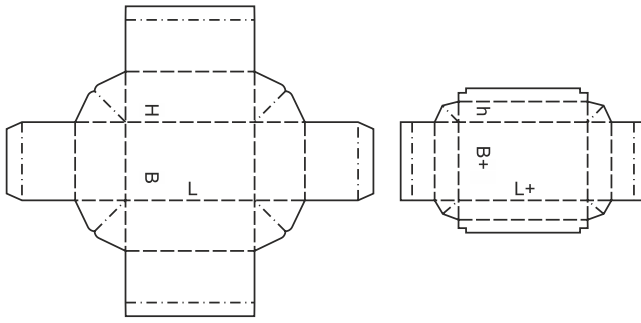


0317

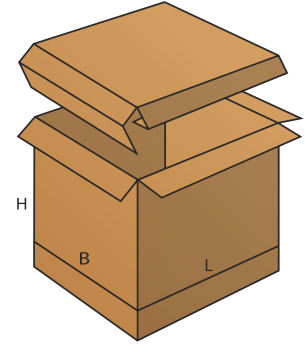
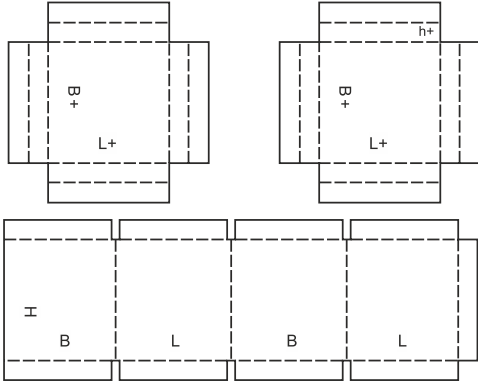




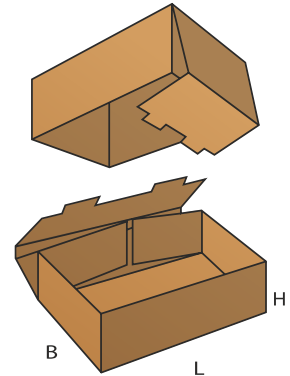
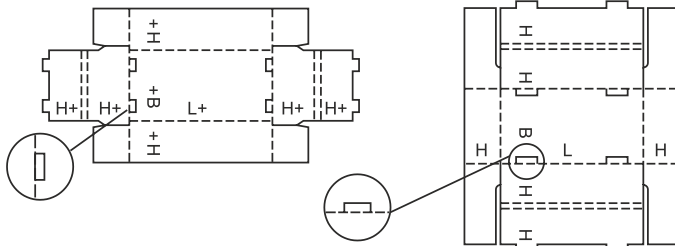
0318



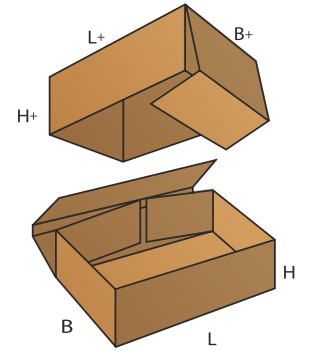
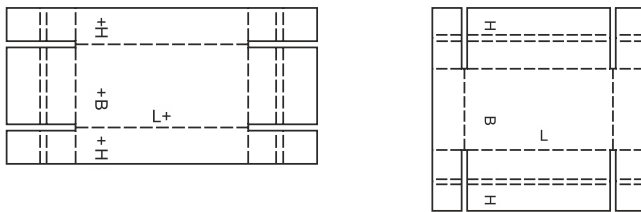
0319



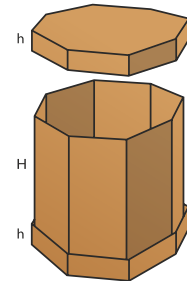
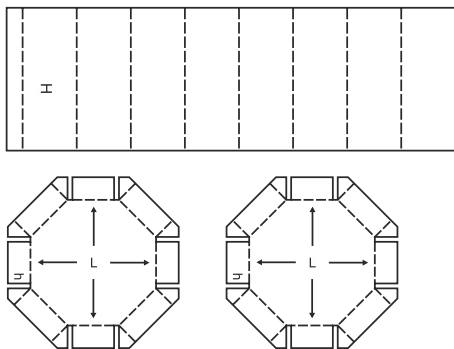
0320



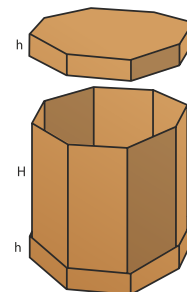
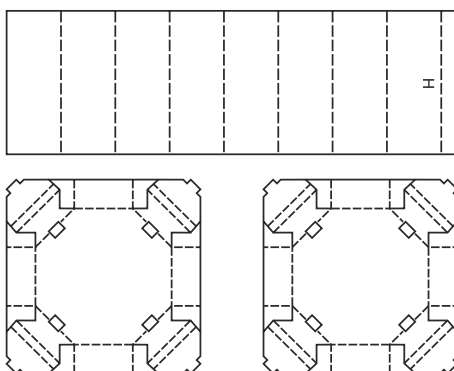
0321



0322



0351

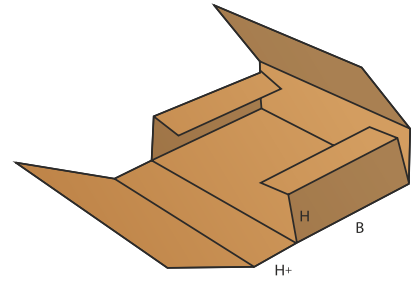
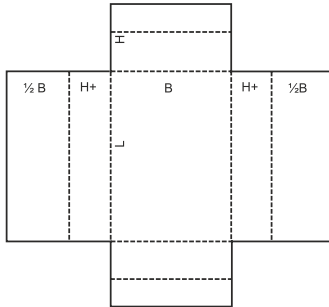


## FEFCO 04XX - SULANKSTOMO TIPO DĖŽĖS

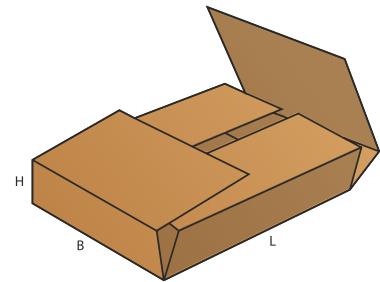
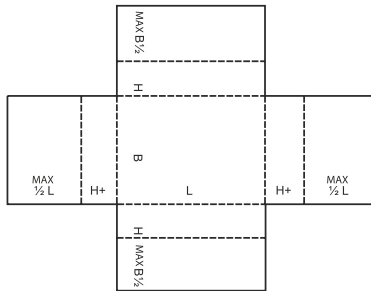
Sulankstomo tipo dėžės ir padėklai susideda iš vienos dalies. Surenkami naudojant fiksuojamas jungtis, surinkimui nenaudojant klijų, kabių, lipnios juostos ar kitų pagalbinių medžiagų.

Dėžutė formuojama nuo pagrindinės dėžutės apačios, atlenkiant dėžutės šonines sienes ir dangtelį. Taip pat galima suformuoti užsegimą, dangtelio fiksavimą, skirtukus, rankenas, demonstracinį langelį.

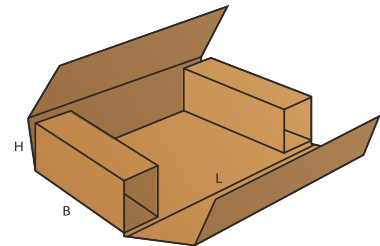
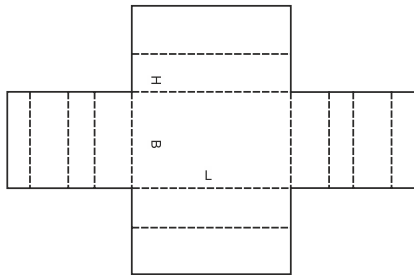
0401



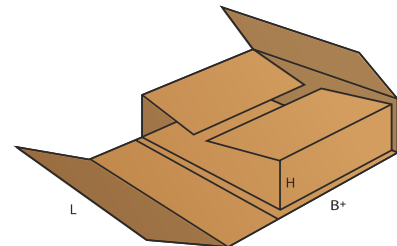
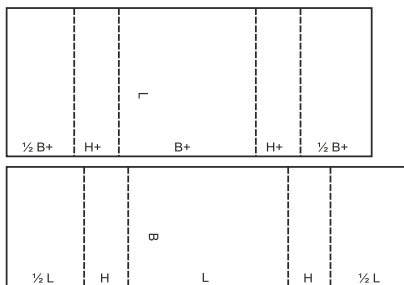
0402



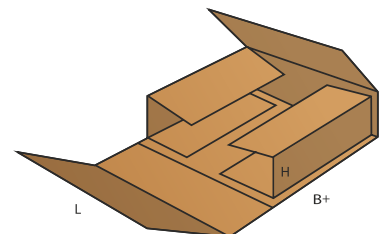
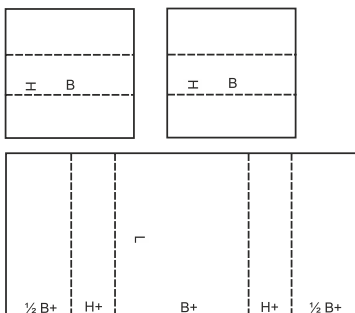
0403



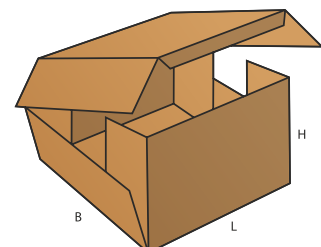
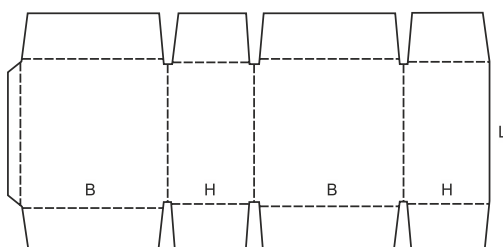
0404



0405

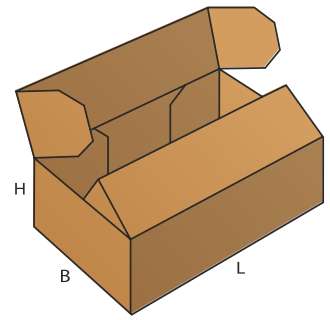
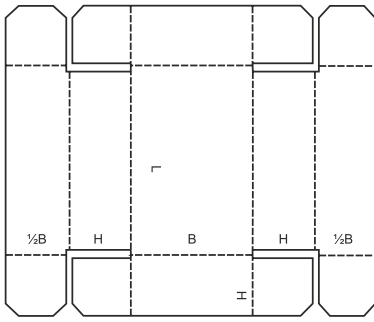


0406

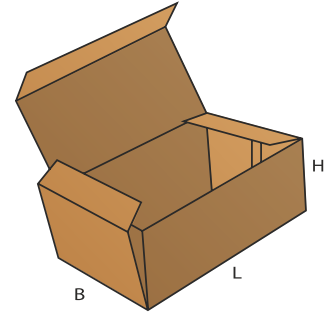
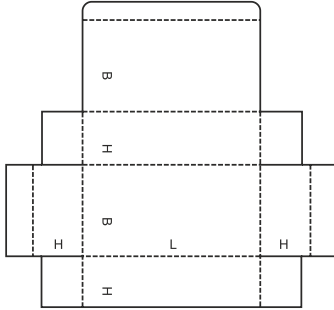




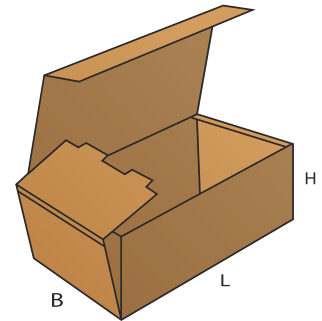
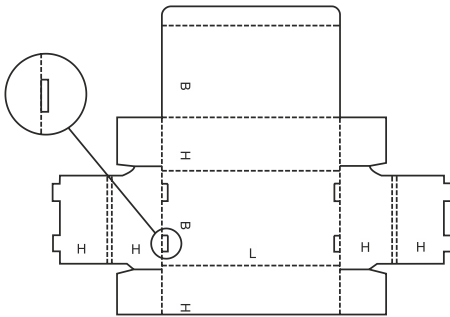
0416



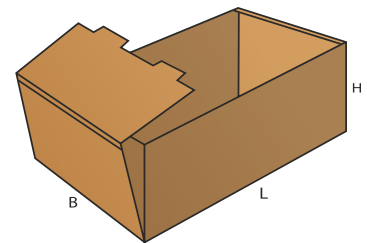
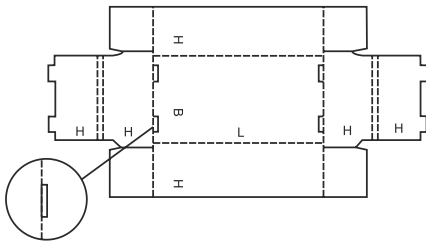
0420



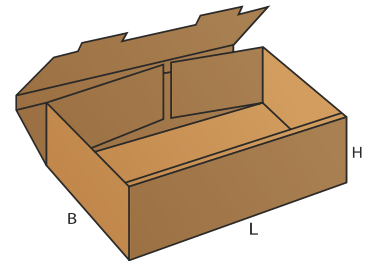
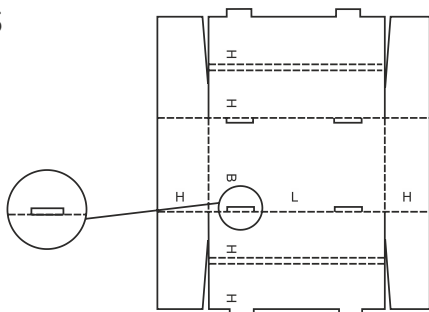
0421



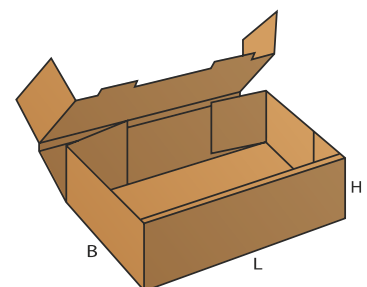
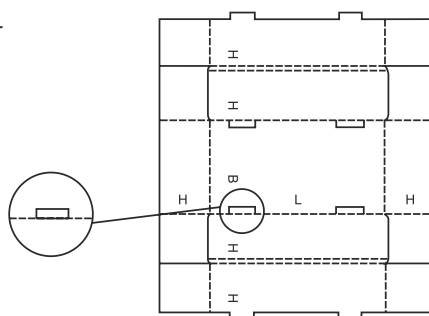
0422



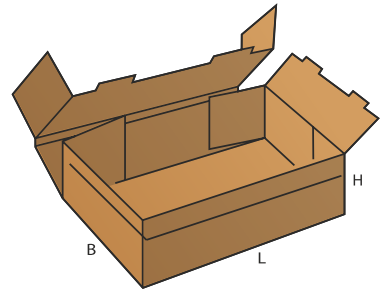
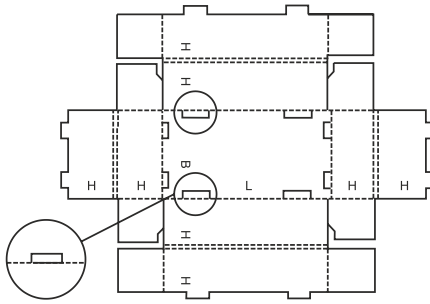
0423



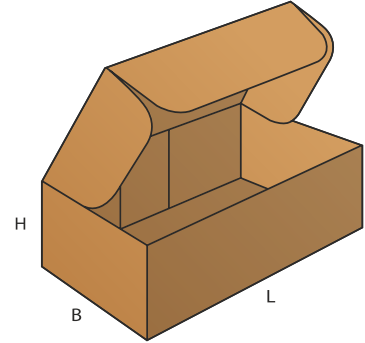
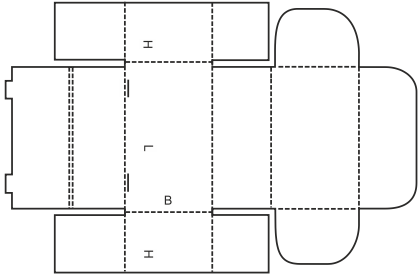
0424



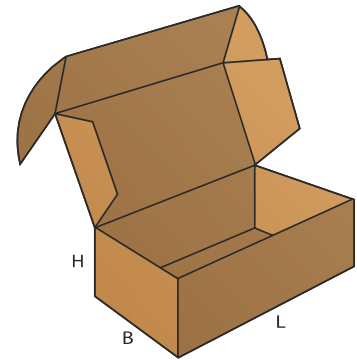
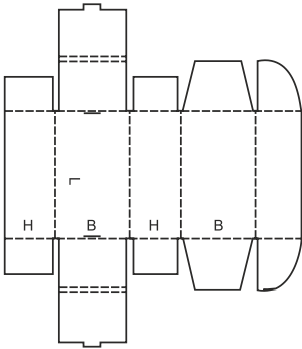
0425



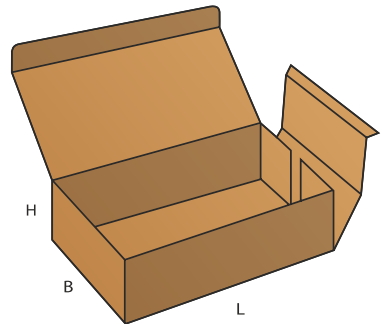
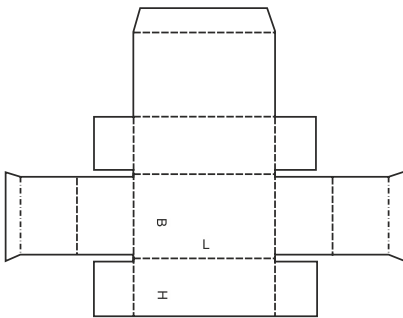
0426



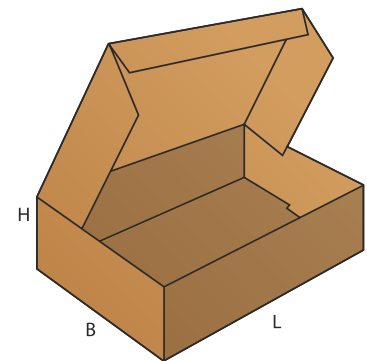
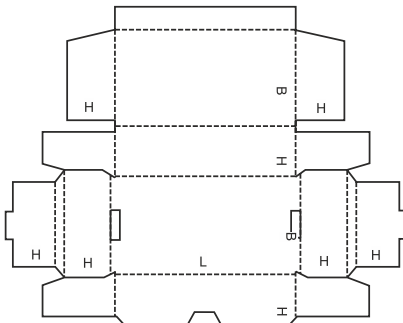
0427



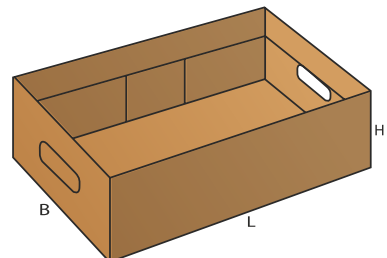
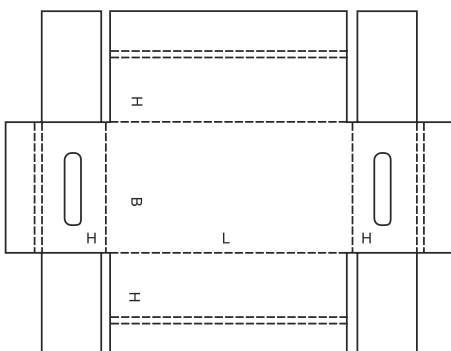
0428



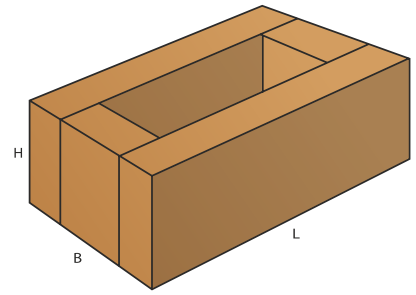
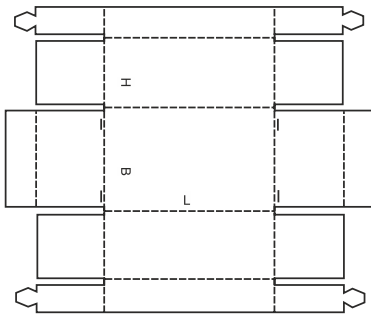
0429



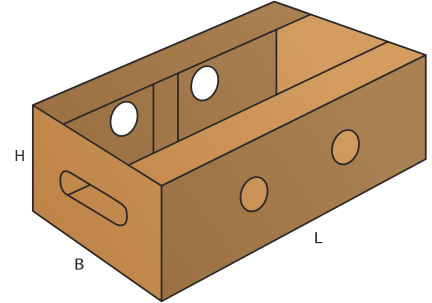
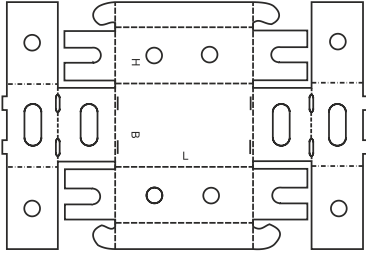
0430



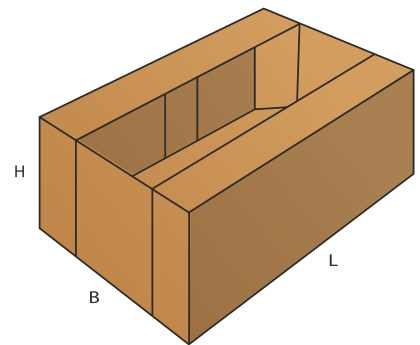
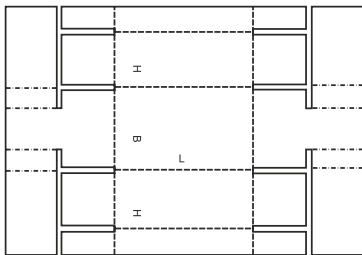
0431



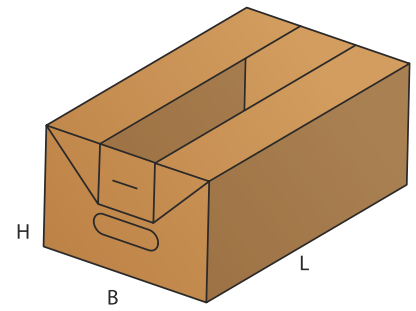
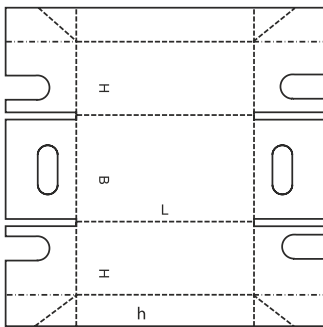
0432



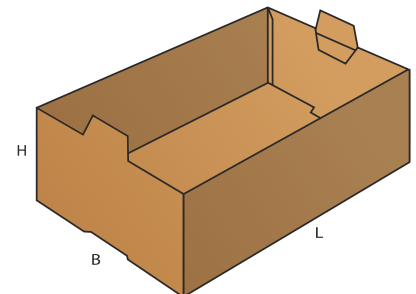
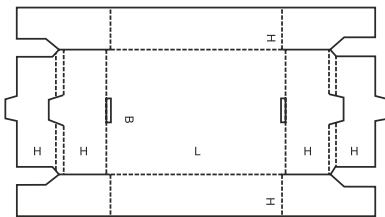
0433



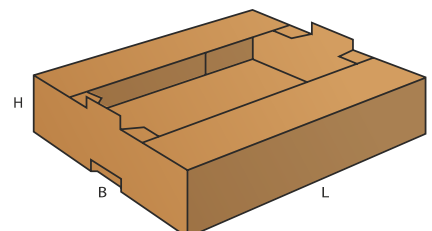
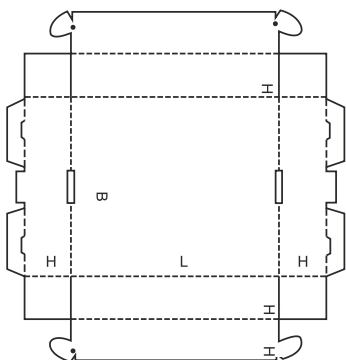
0434



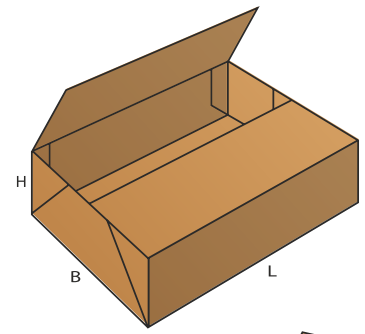
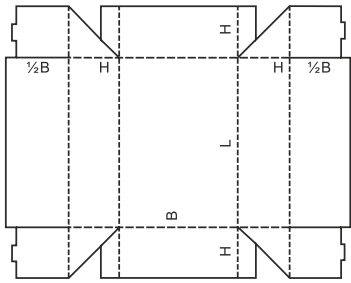
0435



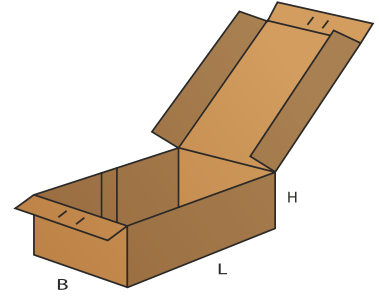
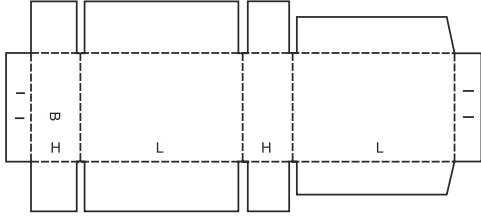
0436



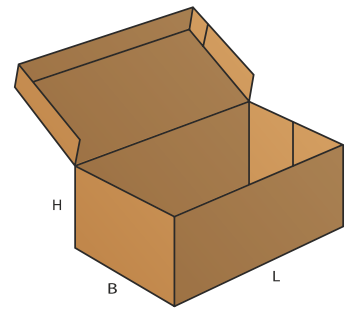
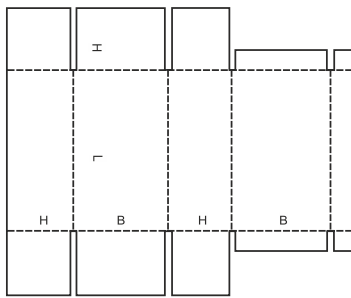
0437



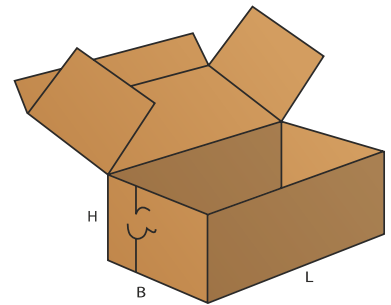
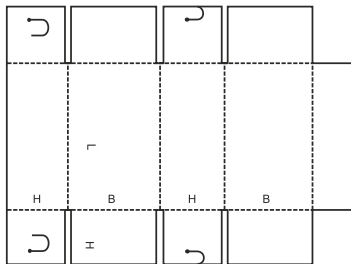
0440



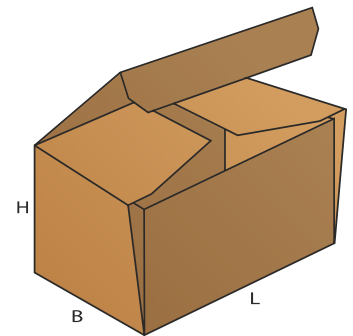
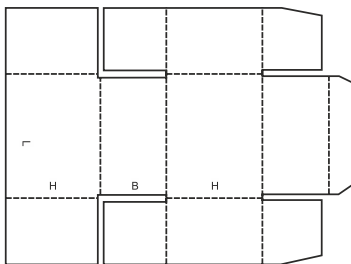
0441



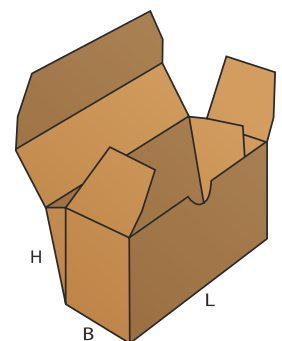
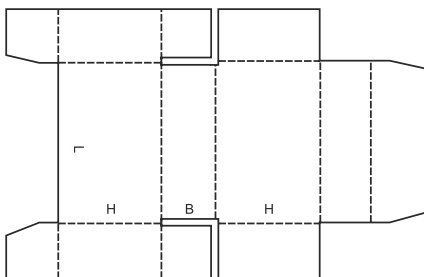
0442



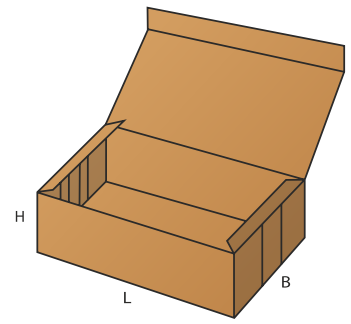
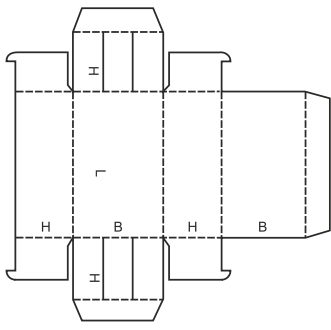
0443



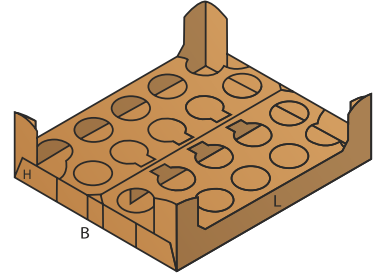
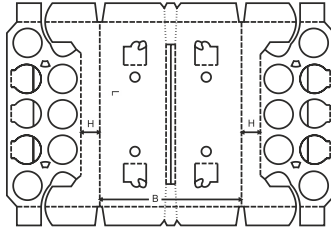
0444



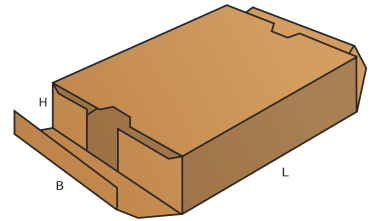
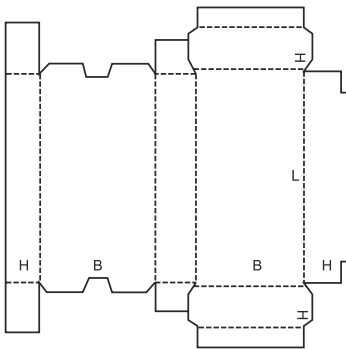
0445



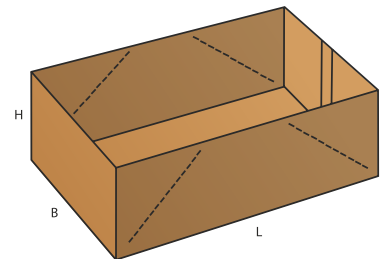
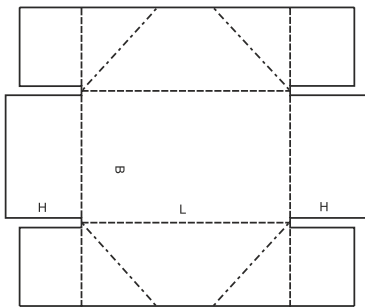
0446



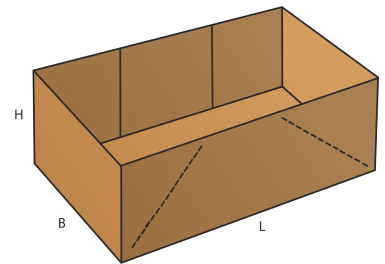
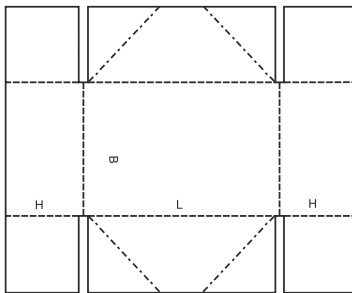
0447



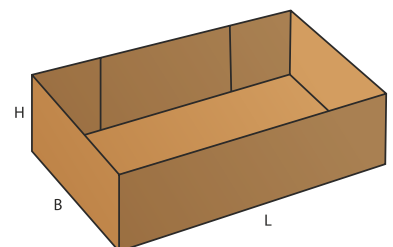
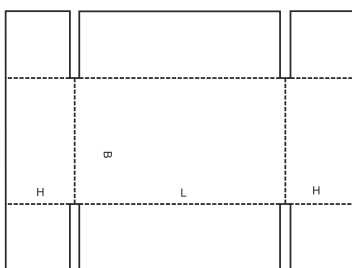
0450



0451

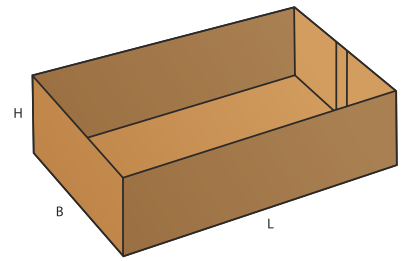
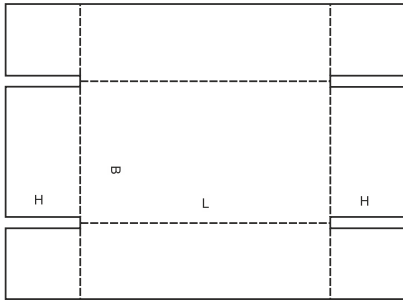


0452

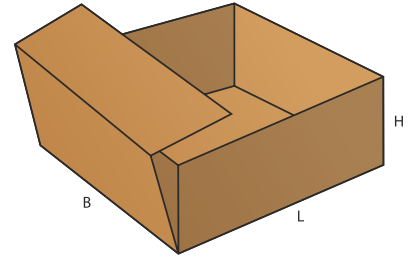
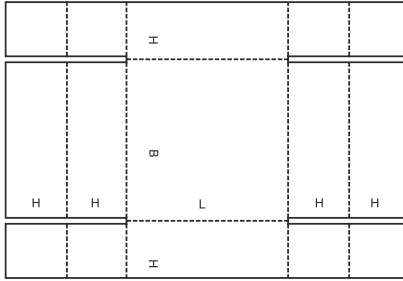




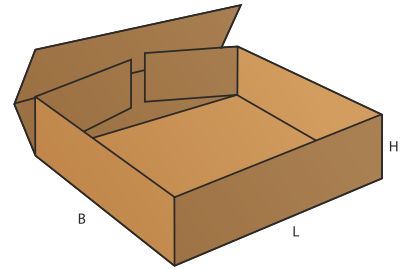
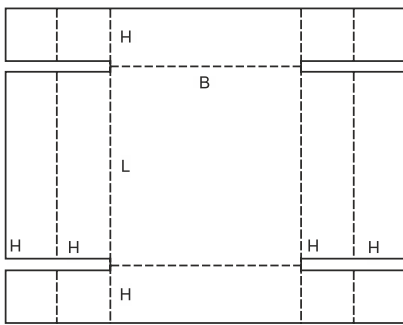
0453



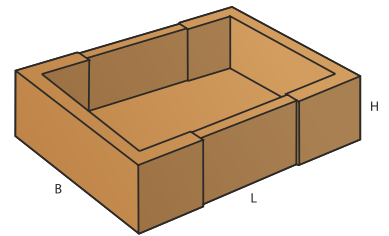
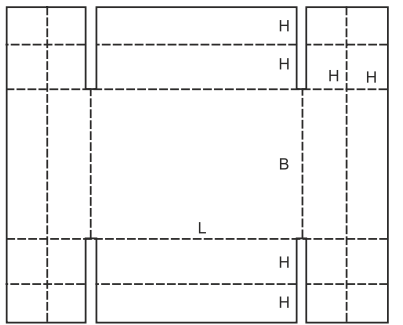
0454



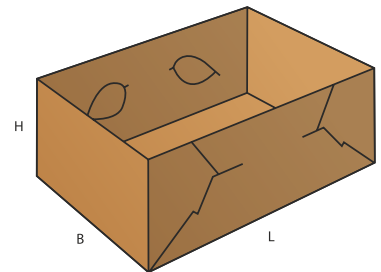
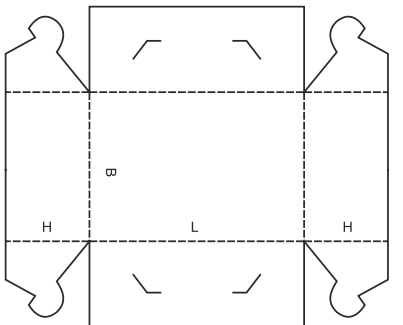
0455



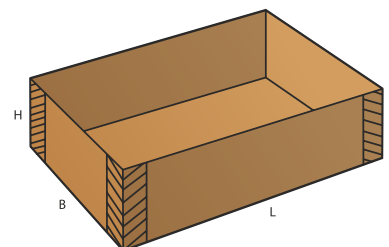
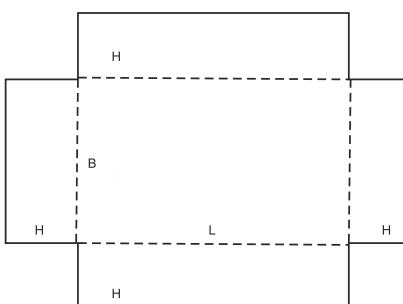
0456



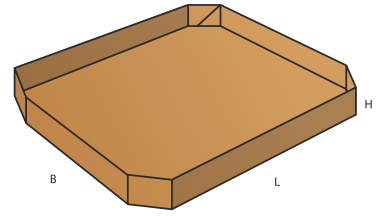
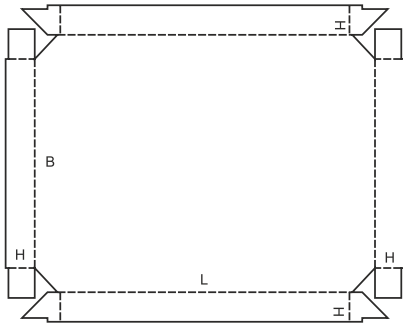
0457



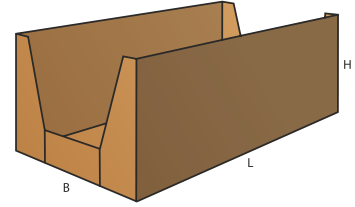
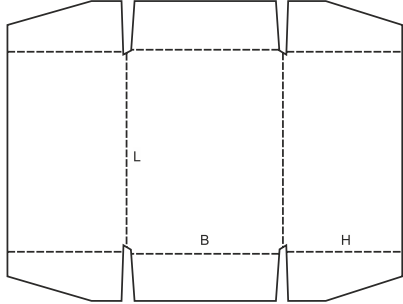
0458



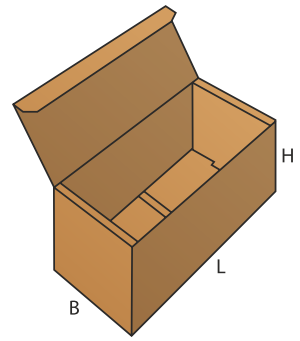
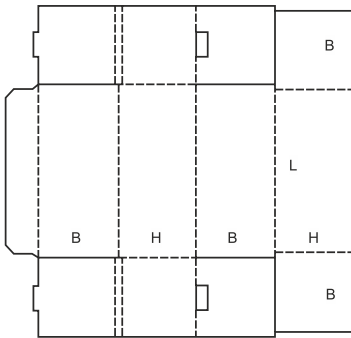
0459



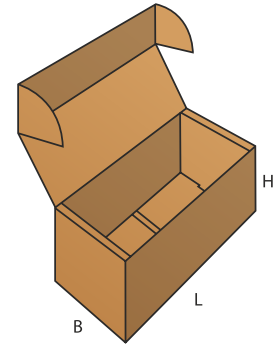
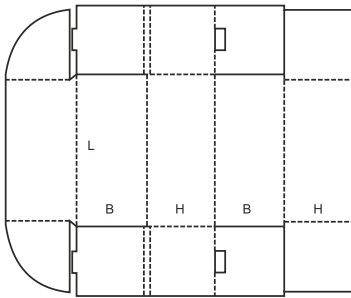
0460



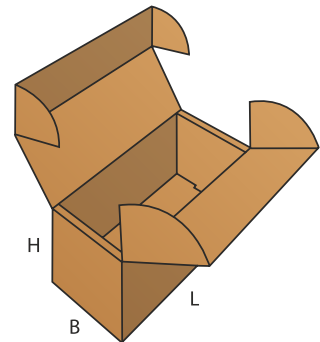
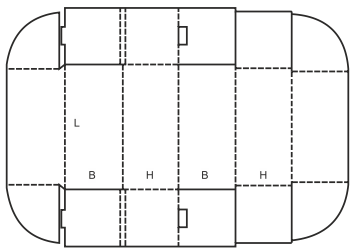
0470



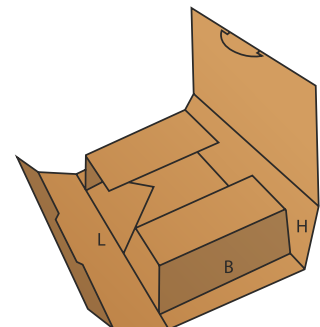
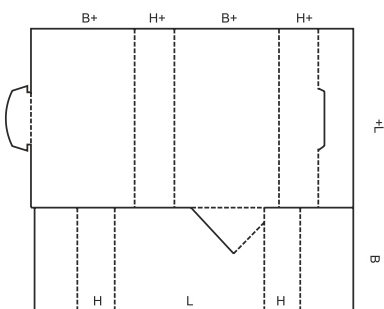
0471



0472



0473

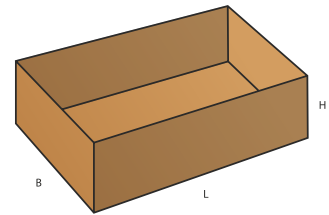


## FEFCO 05XX – PERSIDENGIANČIO TIPO DĖŽĖS

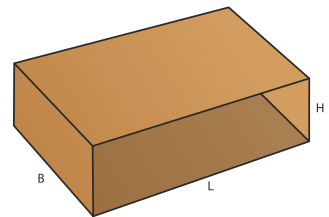
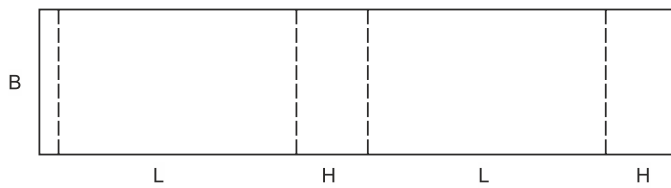
Persidengiančio tipo dėžės susideda iš kelių dalių, įdėklų ir įmovos stumdomas skirtingomis kryptimis vienas su kitu. Ši grupė taip pat apima rankovės tipo dėžes.

Dėžutės, surenkamos iš atskirų dalių, naudojant kabes, lipnią juostą, klijus. Taip pat naudojant kitokio tipo dėžėms skirtas korpusines dalis.

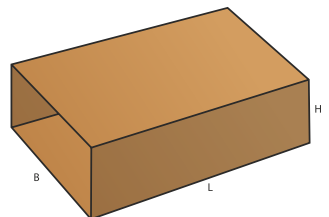
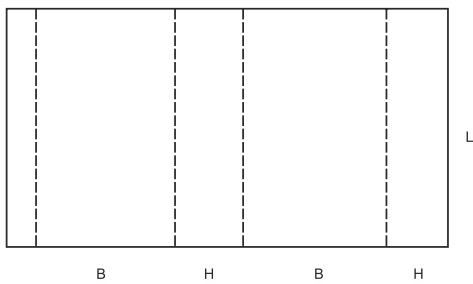
0501



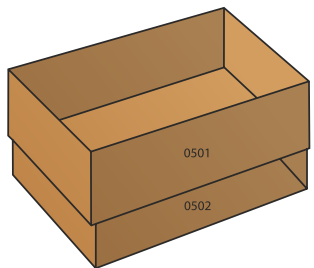
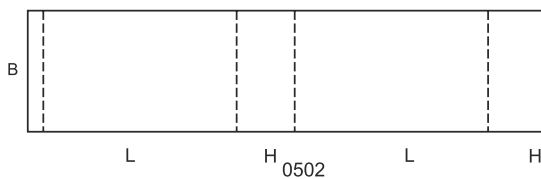
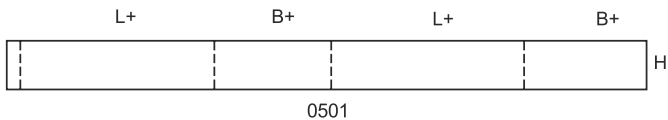
0502



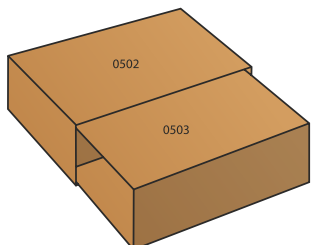
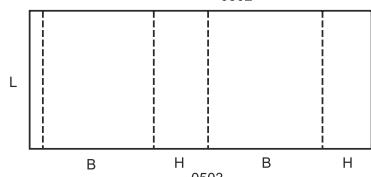
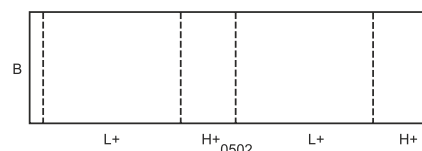
0503



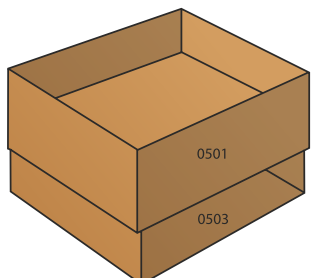
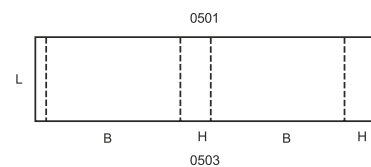
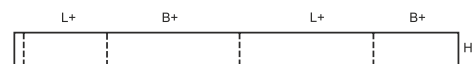
0504



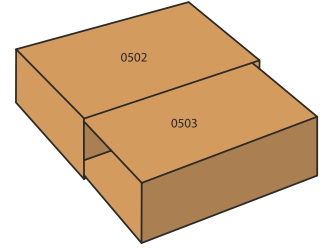
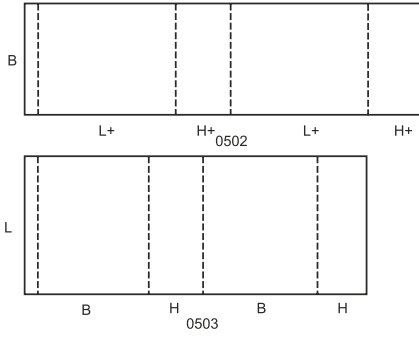
0505



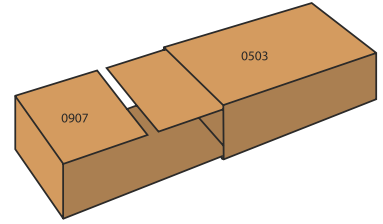
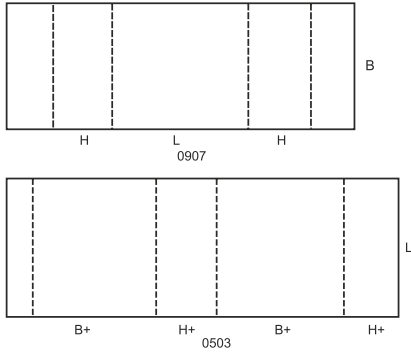
0507



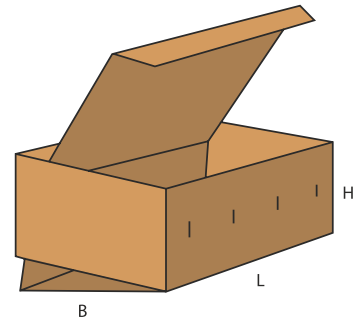
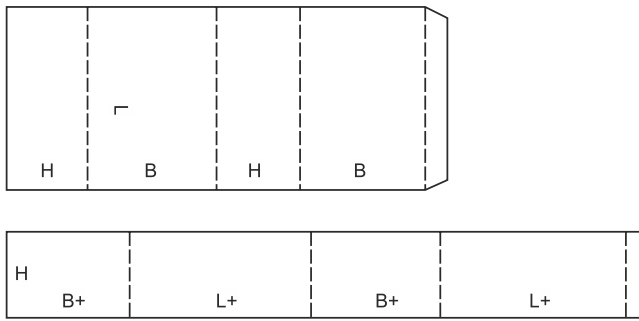
0508



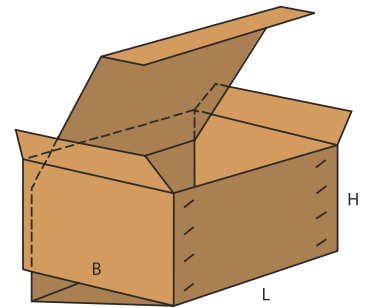
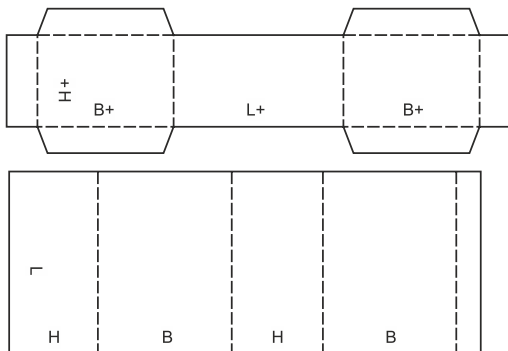
0509



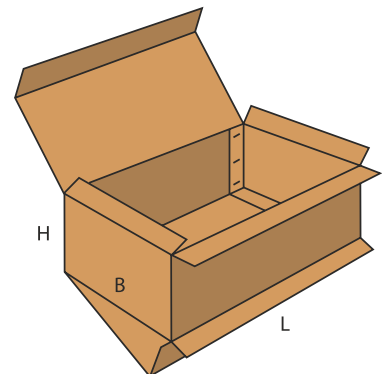
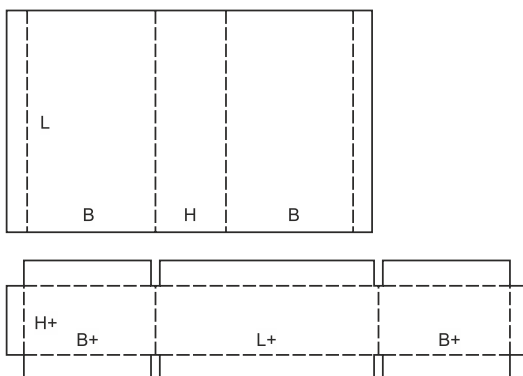
0510



0511



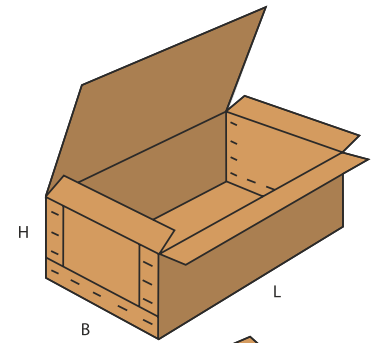
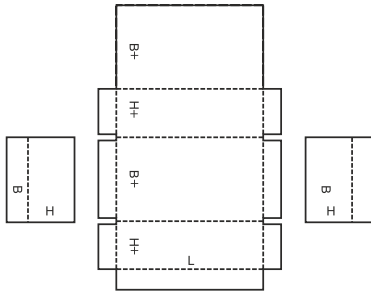
0512



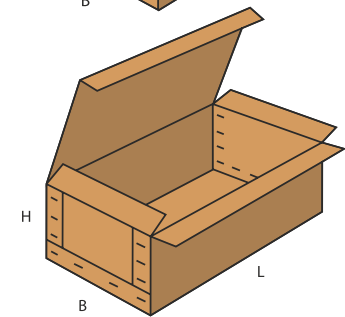
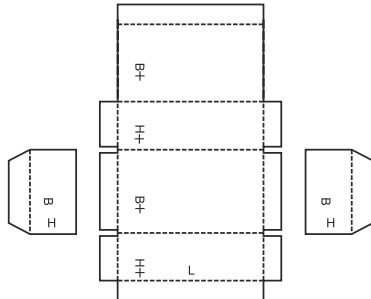
## FEFCO 06XX – KIETO SUJUNGIMO TIPO DĖŽĖS

Kieto sujungimo tipo dėžės susideda iš pagrindinės ir iš dviejų atskirų šoninių dalių, kurioms reikalingas kietas sujungimas - susiuvimas viela, sukabinimas metalinėmis kabėmis arba panašaus tipo sujungimas.

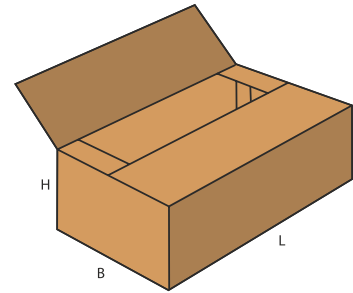
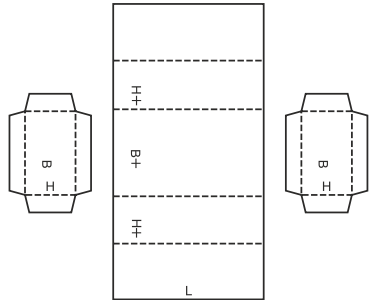
0601



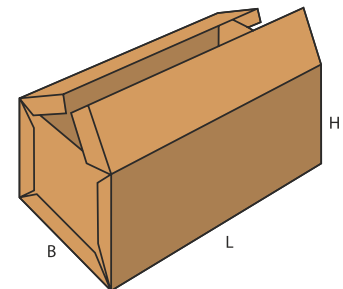
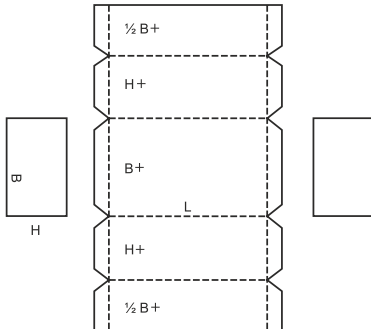
0602



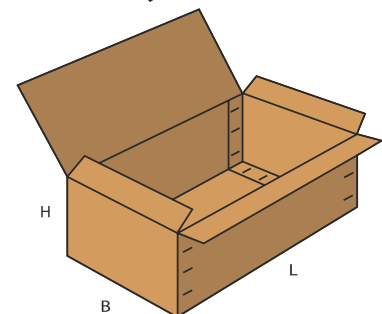
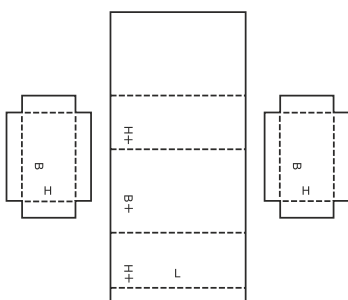
0605



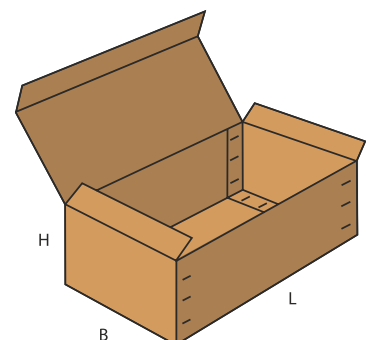
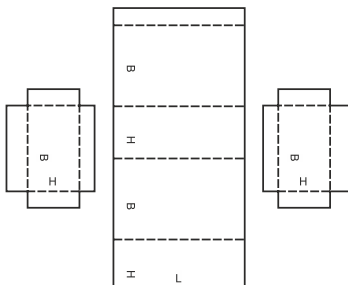
0606



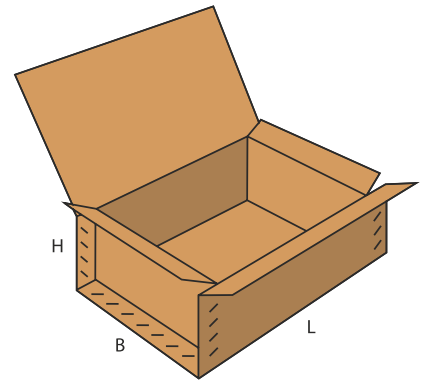
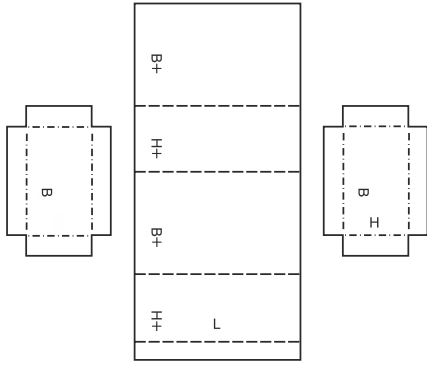
0607



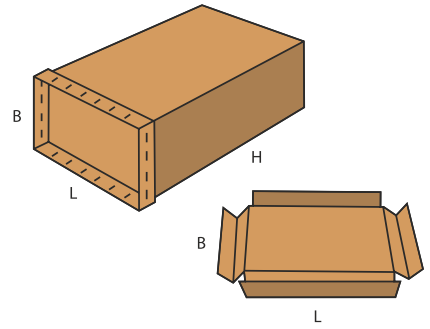
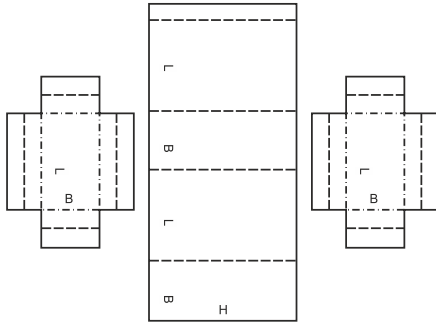
0608



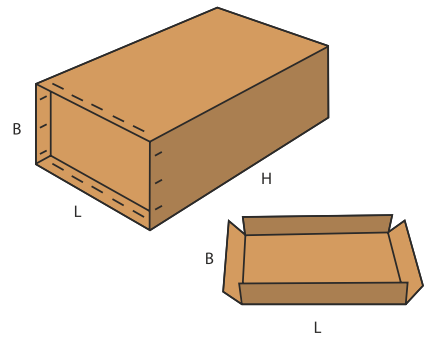
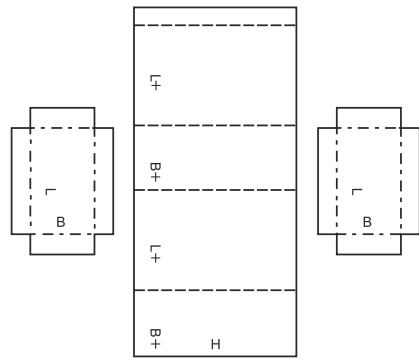
0610



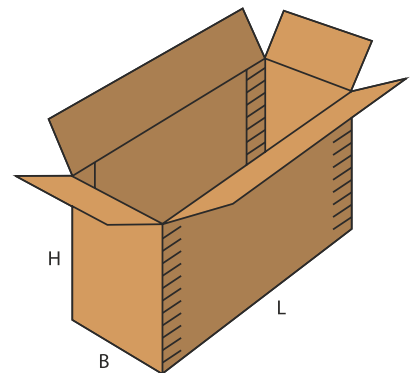
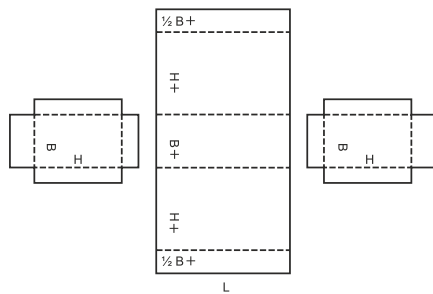
0615



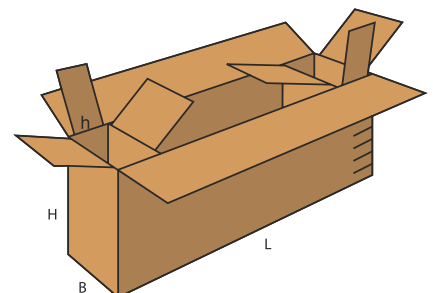
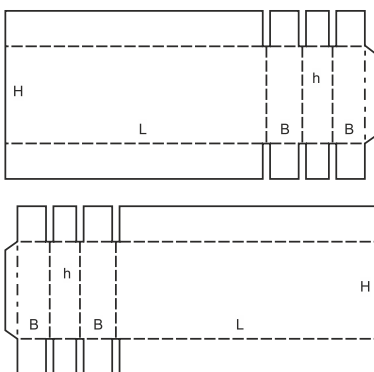
0616



0620



0621

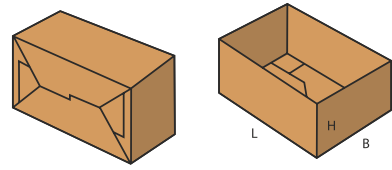
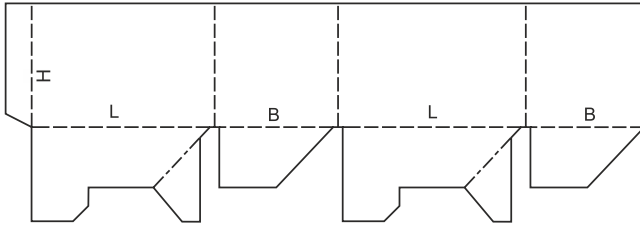


## FEFCO 07XX – GREITO SURINKIMO DĖŽĖS.

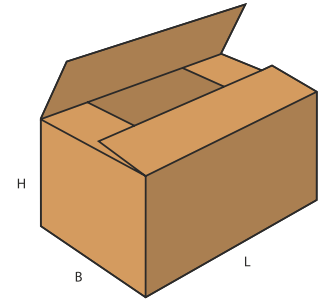
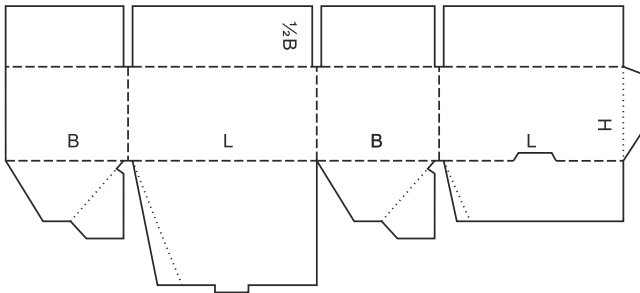
Greito surinkimo galutinai paruoštos tipo dėžės.

Dažniausiai iš vienos dalies sulankstomos dėžės.

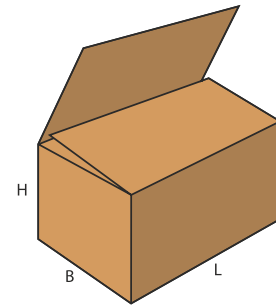
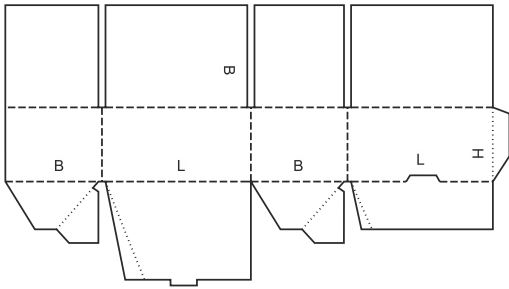
0700



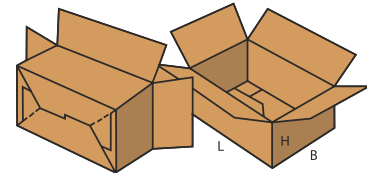
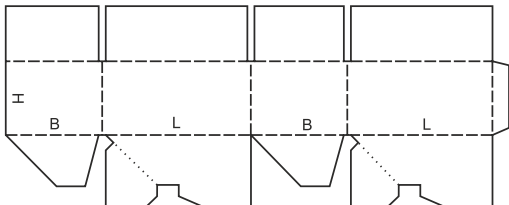
0701



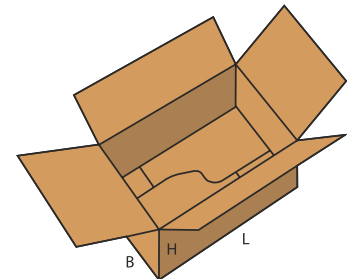
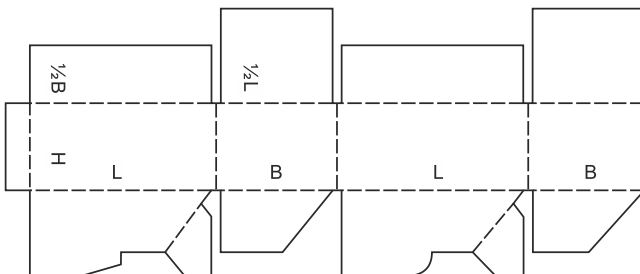
0703



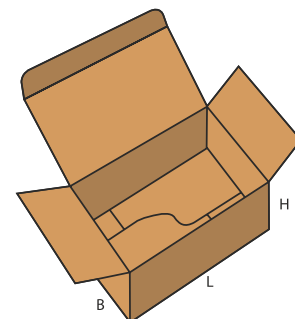
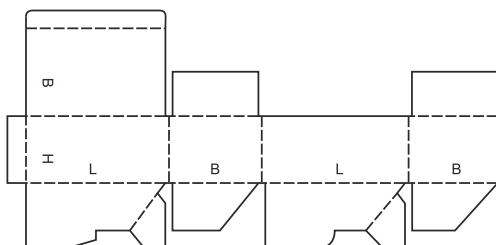
0711



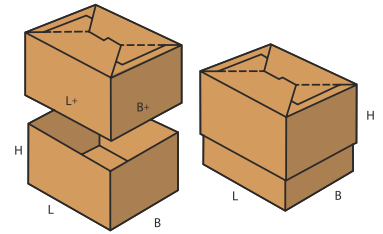
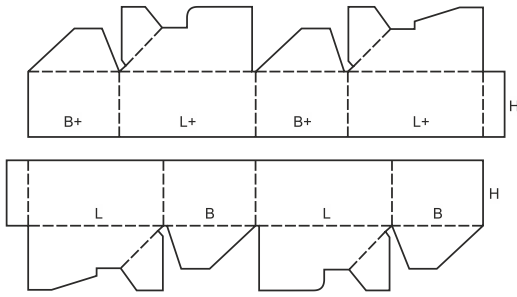
0712



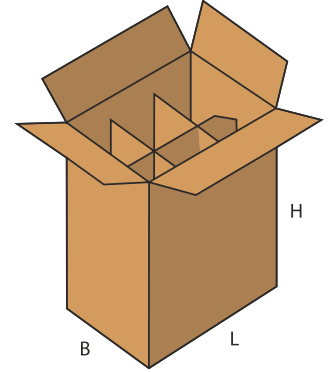
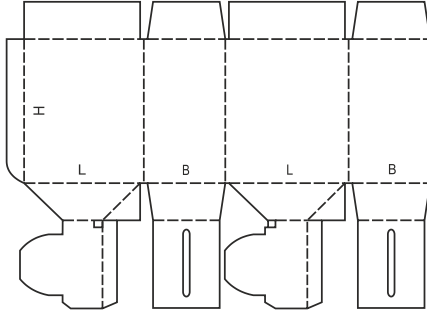
0713



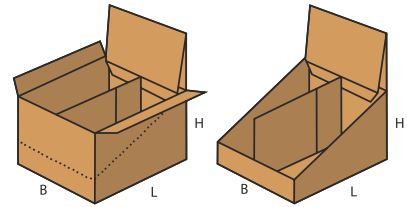
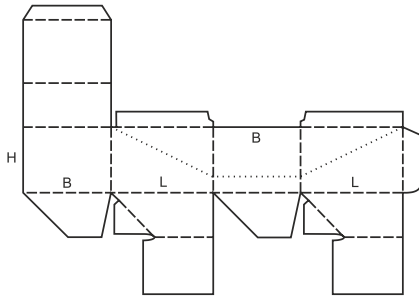
0714



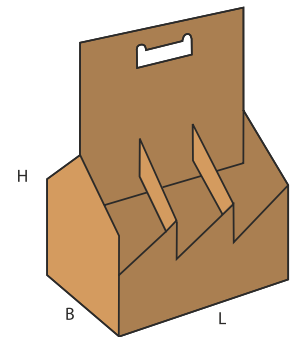
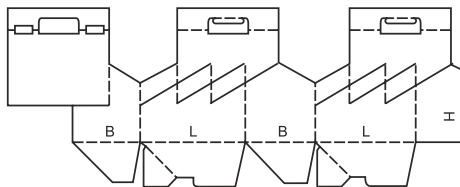
0715



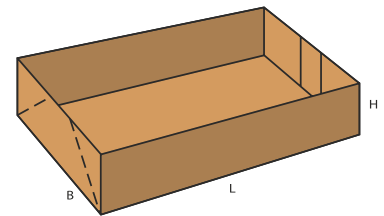
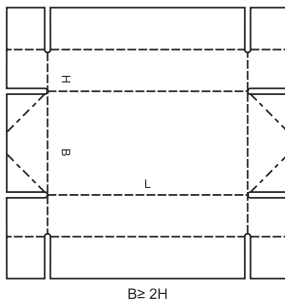
0716



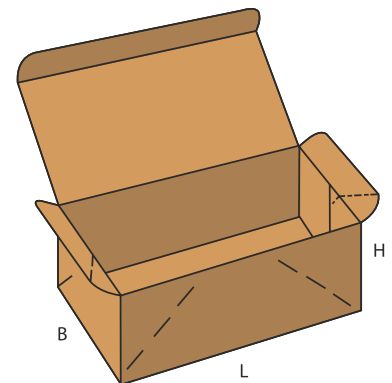
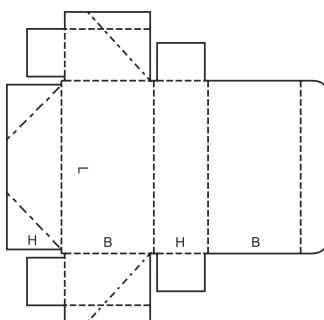
0717



0718

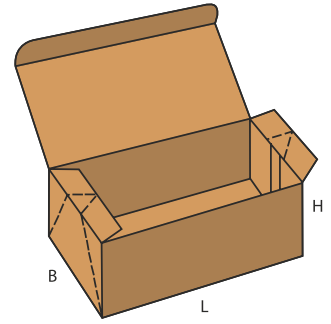
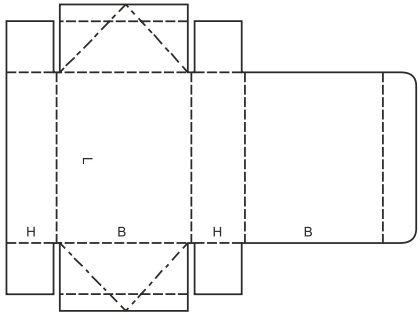


0747

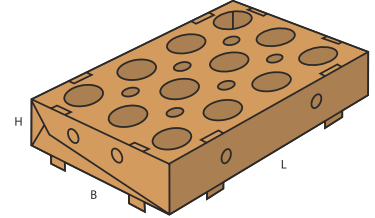
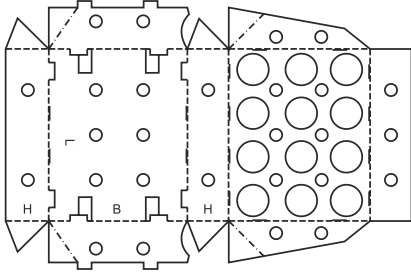




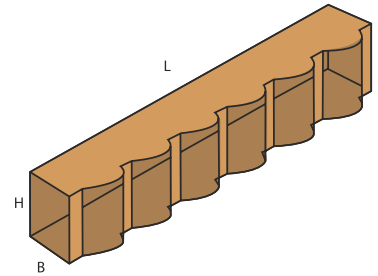
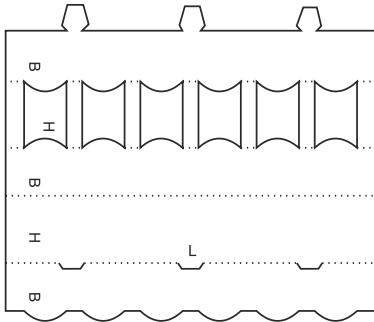
0748



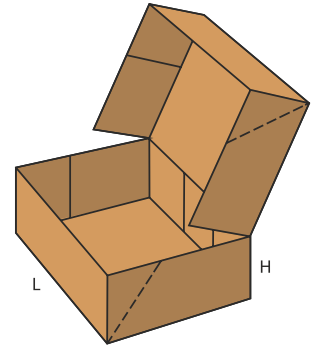
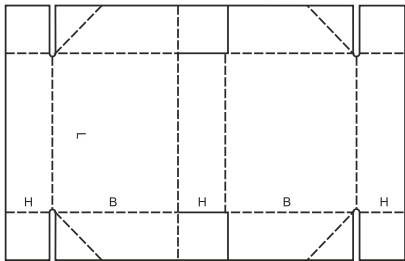
0751



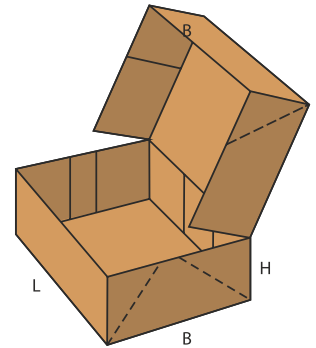
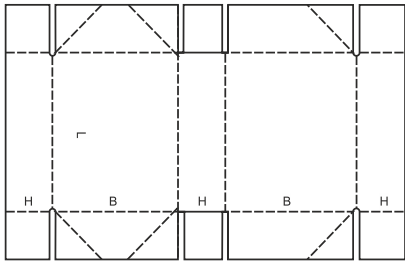
0752



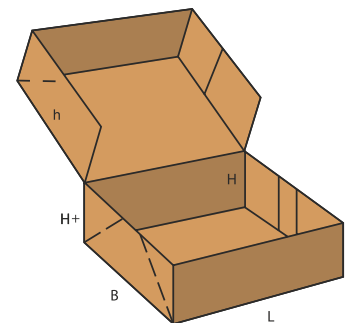
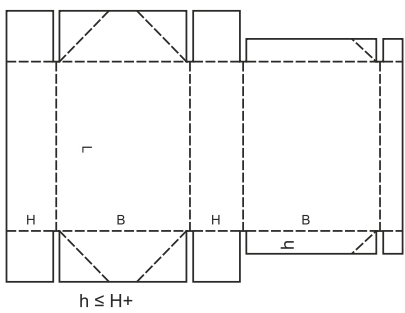
0759



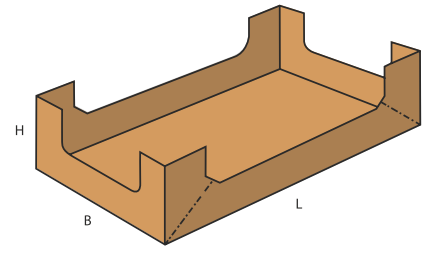
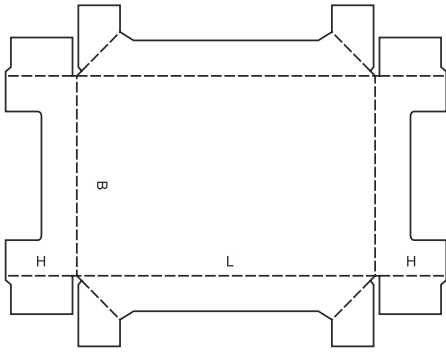
0760



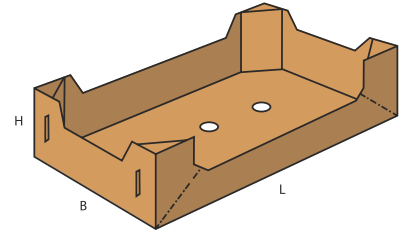
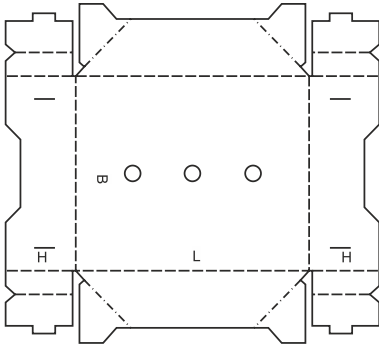
0761



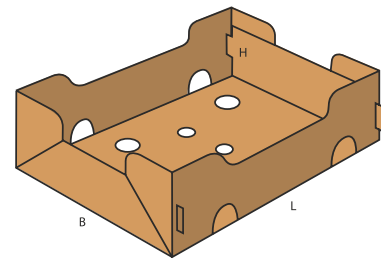
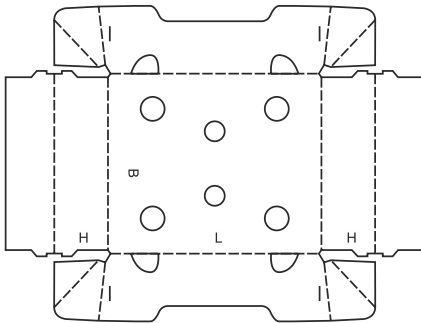
0770



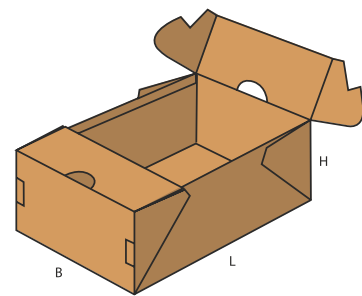
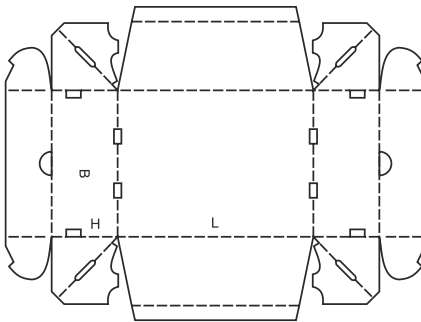
0771



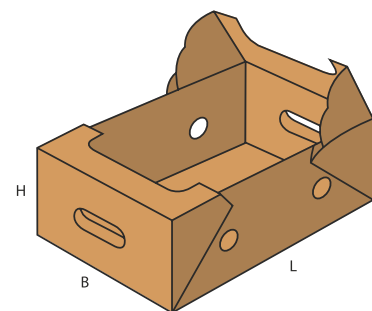
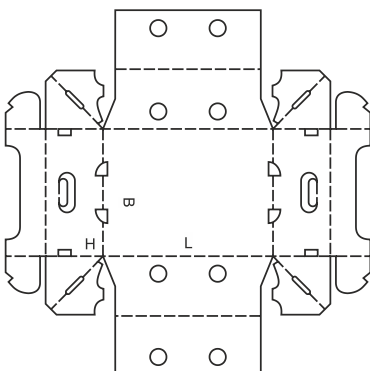
0772



0773

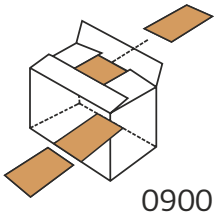


0774

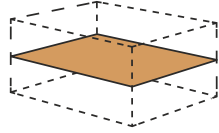


## FEFCO 09XX – VIDINIAI ELEMENTAI

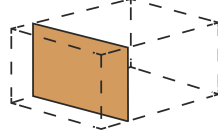
Vidiniai dėžutės elementai: tarpikliai, grotelės, dugno įdėklai, pertvaros, skirtukai, perdengimai atskirti pakuotėje esantiems daiktams.



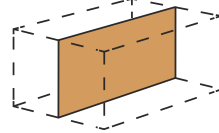
0900



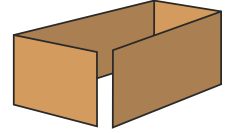
0901



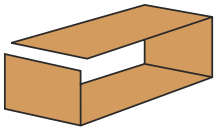
0902



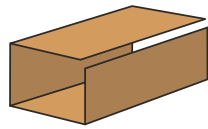
0903



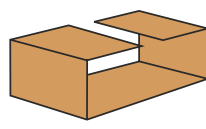
0904



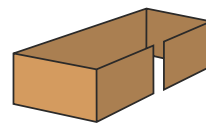
0905



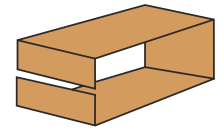
0906



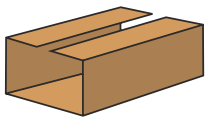
0907



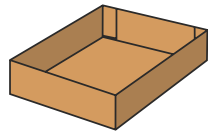
0908



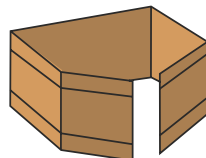
0909



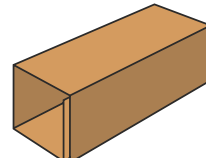
0910



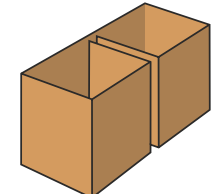
0911



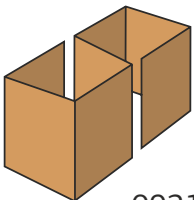
0913



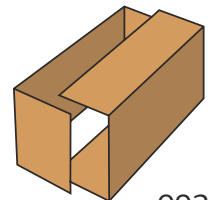
0914



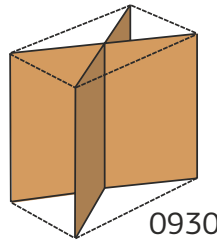
0920



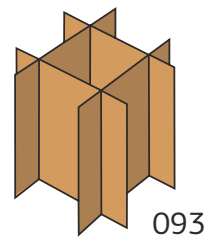
0921



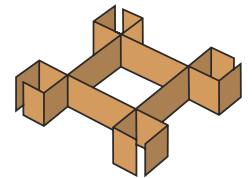
0929



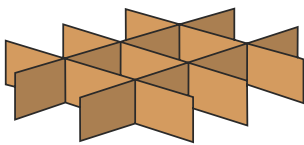
0930



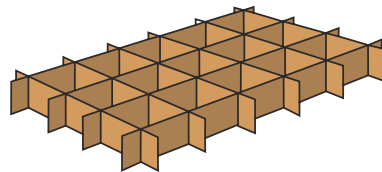
0931



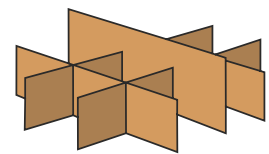
0932



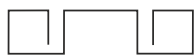
0933



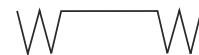
0934



0935



0941



0943



0940



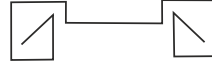
0942



0944



0946



0948



0945



0947



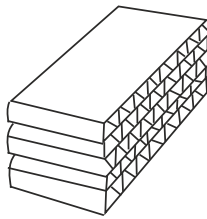
0949



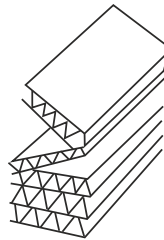
0950



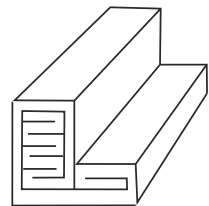
0951



0965



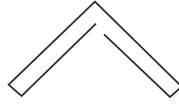
0966



0967



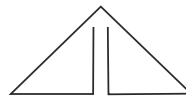
0970



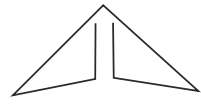
0971



0972



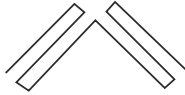
0973



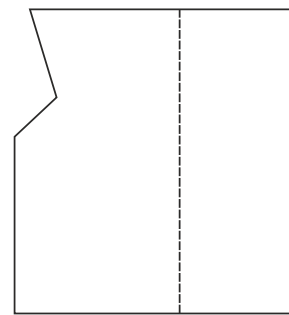
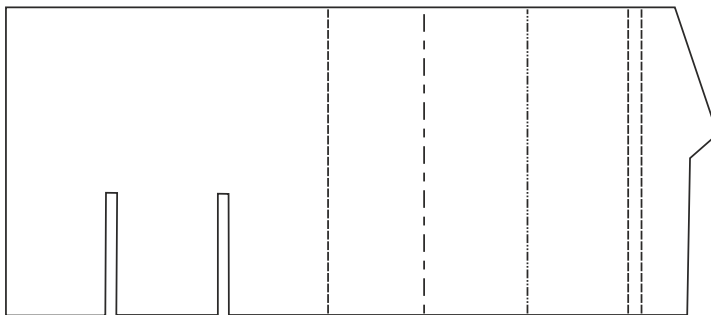
0974



0975



0976



0982/0999